

COLLEGE OF CENTRAL FLORIDA ORGANIZATIONAL CHART

DISTRICT BOARD OF TRUSTEES

Rusty Branson	Marion County
Joyce Brancato	Levy County
Robert Durrance	Levy County
William 'Bill' Edgar	Marion County
Frederick Roberts, Jr.	Marion County
Charlie Stone	Marion County

Dr. James Henningsen
College President

VACANT
Director of Governmental
Relations and Special Assistant
to the President

Erin Carter
Manager - Office of the
President and Board Operations

Christopher R. Knife
Vice President of
Institutional Advancement
and CEO of CF Foundation

**Dr. Tamara F. Viviano-
Broderick**
Vice President of
Institutional Effectiveness &
College Relations

Charles A. Prince
Vice President of
Administration and Finance

Dr. Mark L. Paugh
Vice President of Academic
Affairs

Dr. Vernon L. Lawter
Vice President of Regional
Campuses

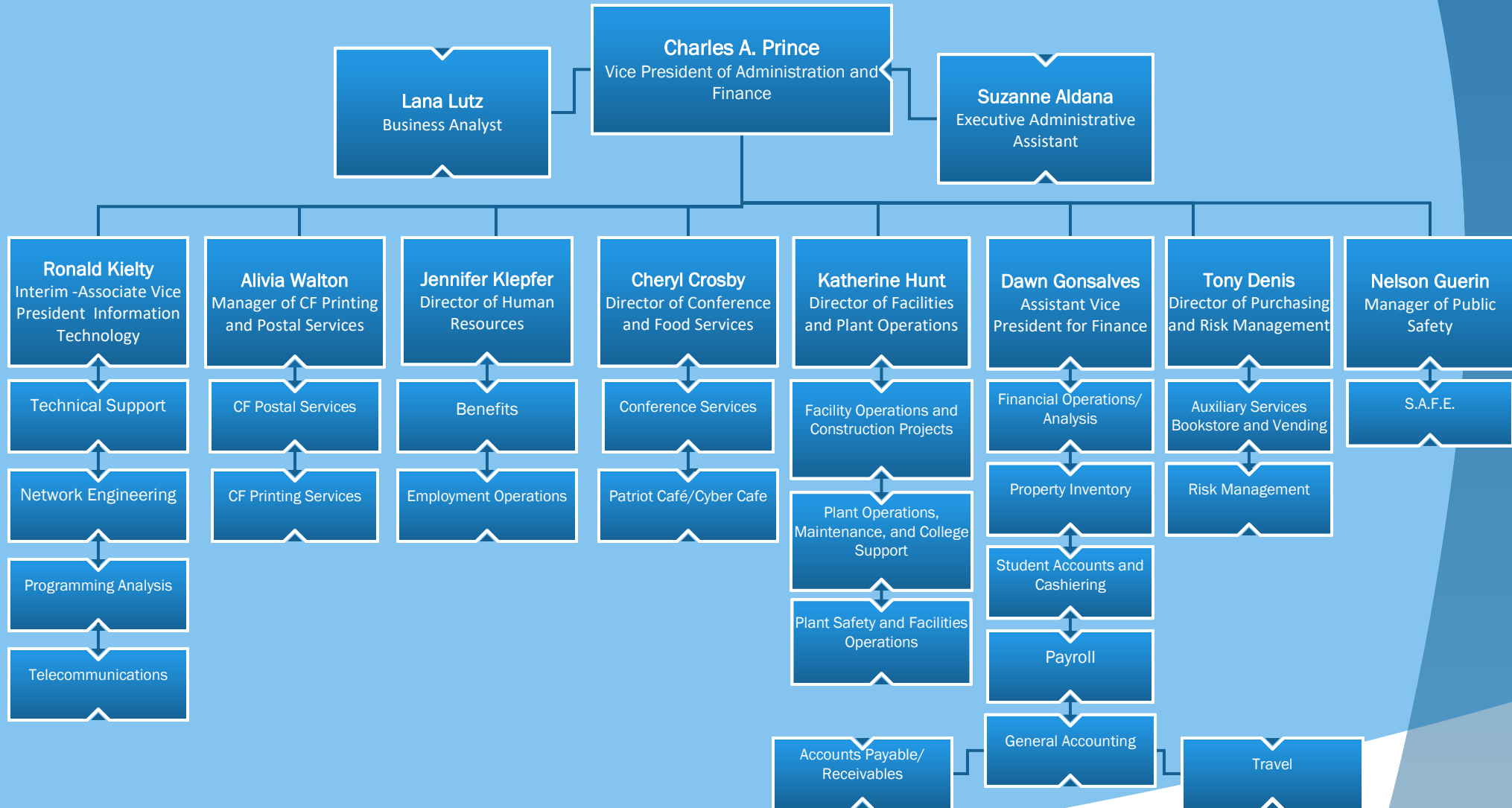
Dr. Saul Reyes
Vice President of Student
Affairs and Enrollment
Management

Dr. Jennifer L. Frys
Vice President of
Workforce Development
and Innovation

Continuous Notice of Nondiscrimination: College of Central Florida does not discriminate against any person on the basis of race, color, ethnicity, religion, sex, pregnancy, age, marital status, national origin, genetic information, sexual orientation, gender identity, veteran status or disability status in its programs, activities and employment. For inquiries regarding nondiscrimination policies contact Dr. Mary Ann Begley, Title IX Coordinator, Ocala Campus, Building 3, Room 116, 3001 S.W. College Road, 352-291-4410, or Equity@cf.edu.

COLLEGE OF CENTRAL FLORIDA ORGANIZATIONAL CHART

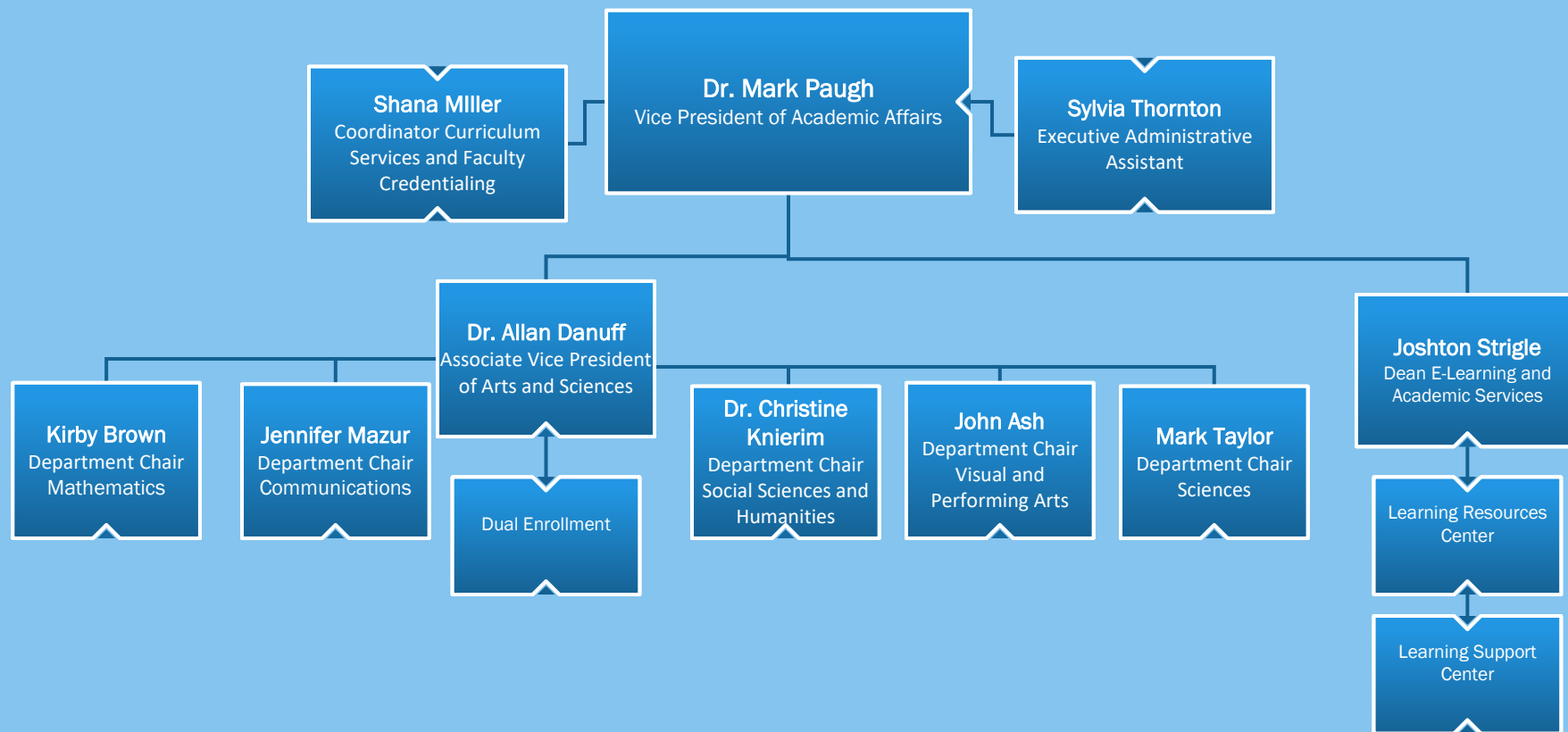
DIVISION OF ADMINISTRATION AND FINANCE



Continuous Notice of Nondiscrimination: College of Central Florida does not discriminate against any person on the basis of race, color, ethnicity, religion, sex, pregnancy, age, marital status, national origin, genetic information, sexual orientation, gender identity, veteran status or disability status in its programs, activities and employment. For inquiries regarding nondiscrimination policies contact Dr. Mary Ann Begley, Title IX Coordinator, Ocala Campus, Building 3, Room 116, 3001 S.W. College Road, 352-291-4410, or Equity@cf.edu.

COLLEGE OF CENTRAL FLORIDA ORGANIZATIONAL CHART

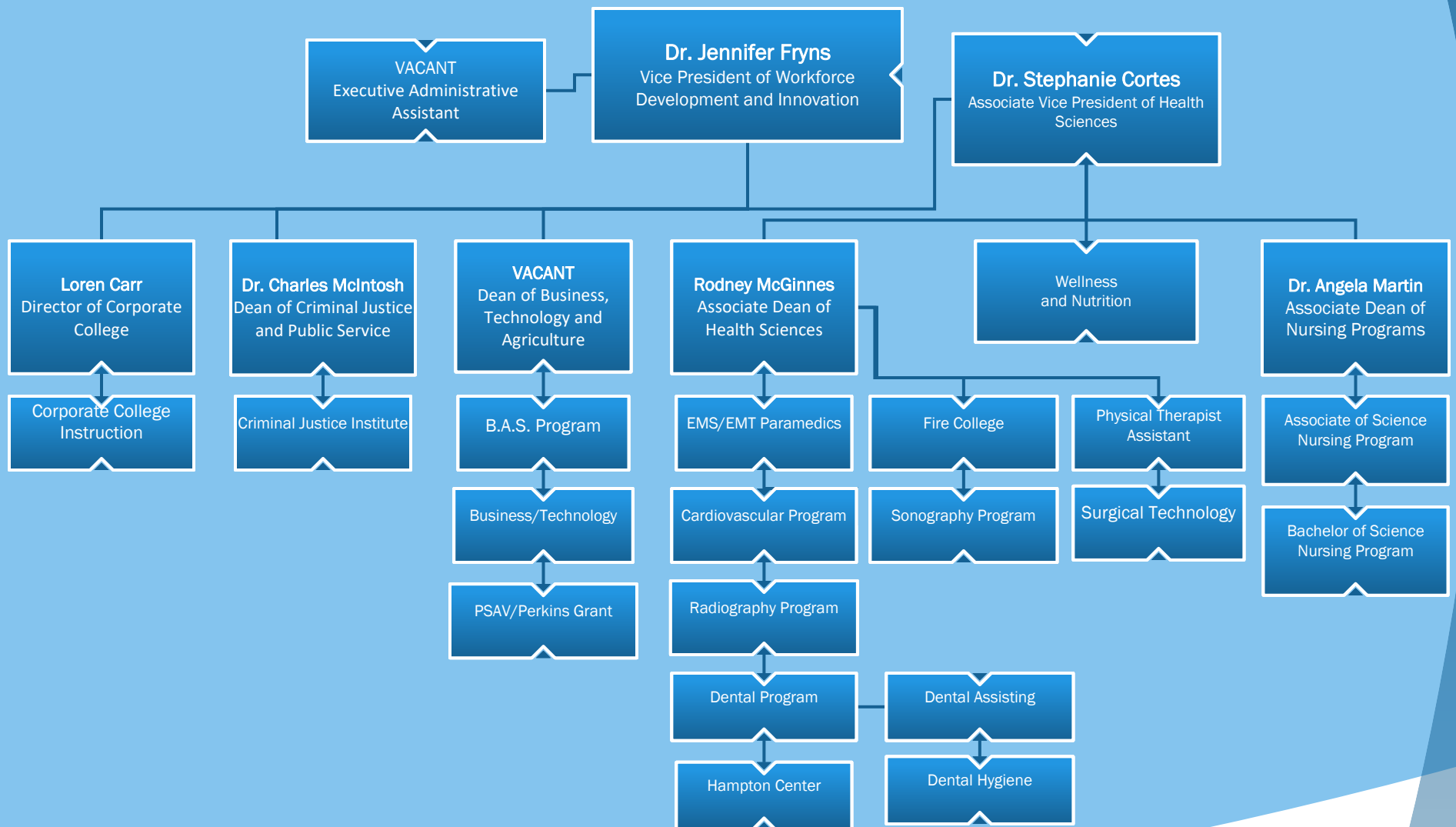
DIVISION OF ACADEMIC AFFAIRS



Continuous Notice of Nondiscrimination: College of Central Florida does not discriminate against any person on the basis of race, color, ethnicity, religion, sex, pregnancy, age, marital status, national origin, genetic information, sexual orientation, gender identity, veteran status or disability status in its programs, activities and employment. For inquiries regarding nondiscrimination policies contact Dr. Mary Ann Begley, Title IX Coordinator, Ocala Campus, Building 3, Room 116, 3001 S.W. College Road, 352-291-4410, or Equity@cf.edu.

COLLEGE OF CENTRAL FLORIDA ORGANIZATIONAL CHART

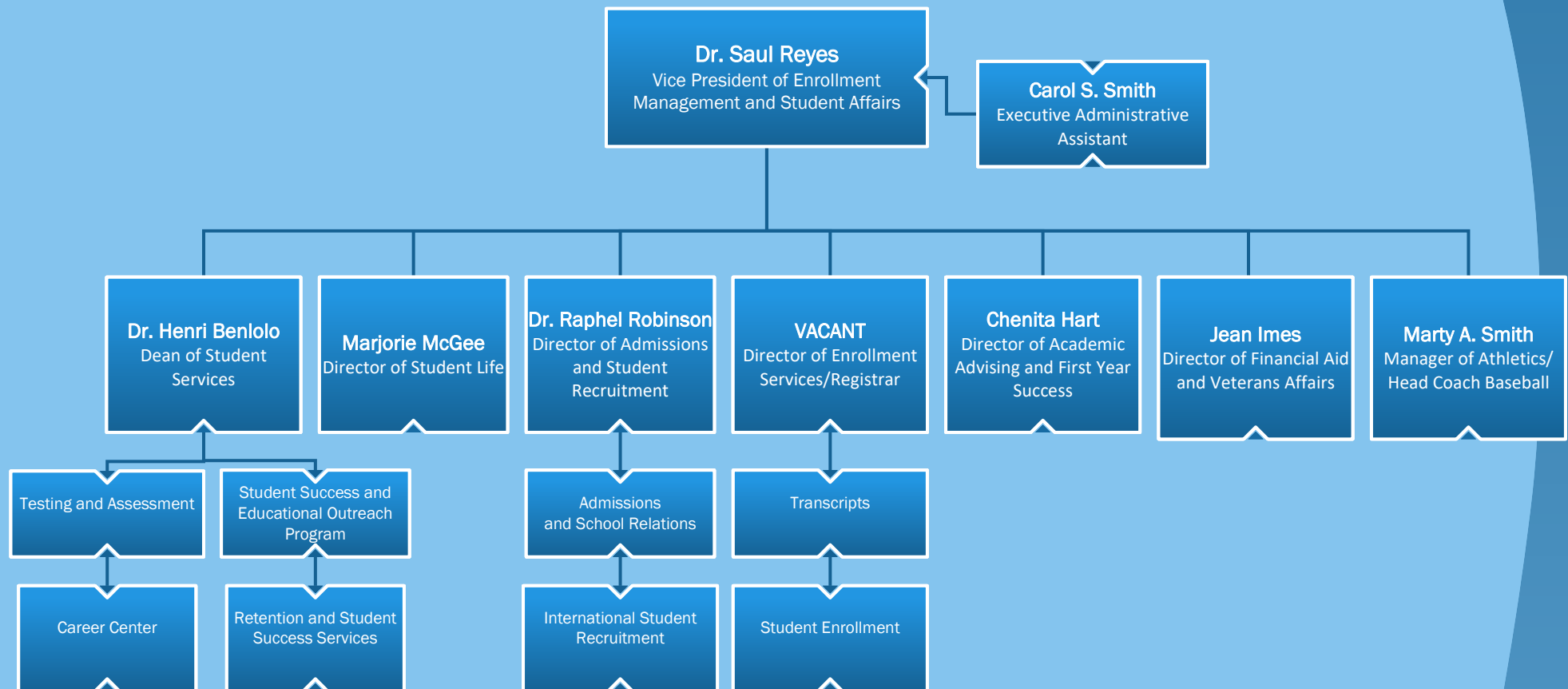
DIVISION OF WORKFORCE AND INNOVATION



Continuous Notice of Nondiscrimination: College of Central Florida does not discriminate against any person on the basis of race, color, ethnicity, religion, sex, pregnancy, age, marital status, national origin, genetic information, sexual orientation, gender identity, veteran status or disability status in its programs, activities and employment. For inquiries regarding nondiscrimination policies contact Dr. Mary Ann Begley, Title IX Coordinator, Ocala Campus, Building 3, Room 116, 3001 S.W. College Road, 352-291-4410, or Equity@cf.edu.

COLLEGE OF CENTRAL FLORIDA ORGANIZATIONAL CHART

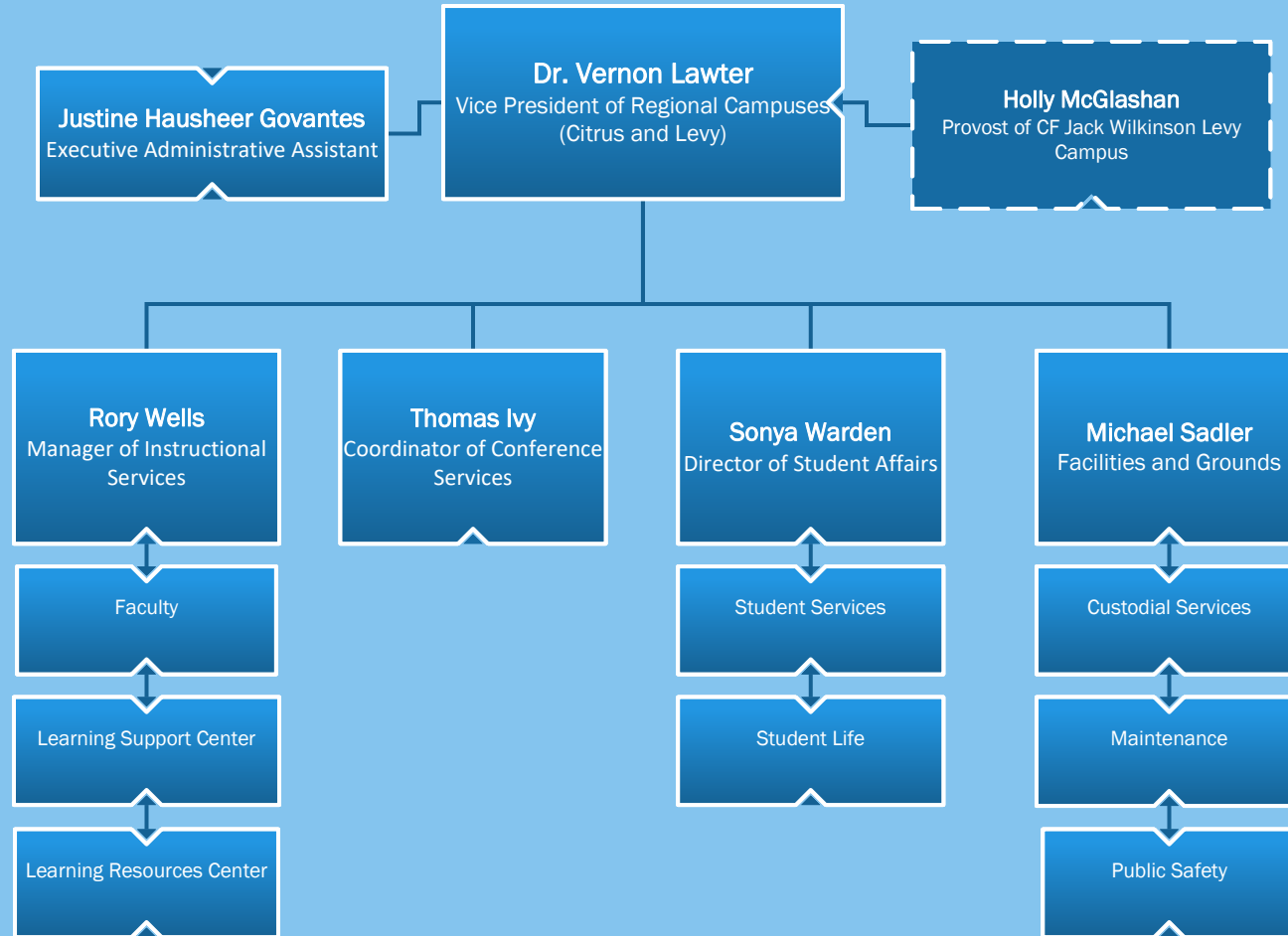
DIVISION OF ENROLLMENT MANAGEMENT AND STUDENT AFFAIRS



Continuous Notice of Nondiscrimination: College of Central Florida does not discriminate against any person on the basis of race, color, ethnicity, religion, sex, pregnancy, age, marital status, national origin, genetic information, sexual orientation, gender identity, veteran status or disability status in its programs, activities and employment. For inquiries regarding nondiscrimination policies contact Dr. Mary Ann Begley, Title IX Coordinator, Ocala Campus, Building 3, Room 116, 3001 S.W. College Road, 352-291-4410, or Equity@cf.edu.

COLLEGE OF CENTRAL FLORIDA ORGANIZATIONAL CHART

CF REGIONAL CAMPUSES

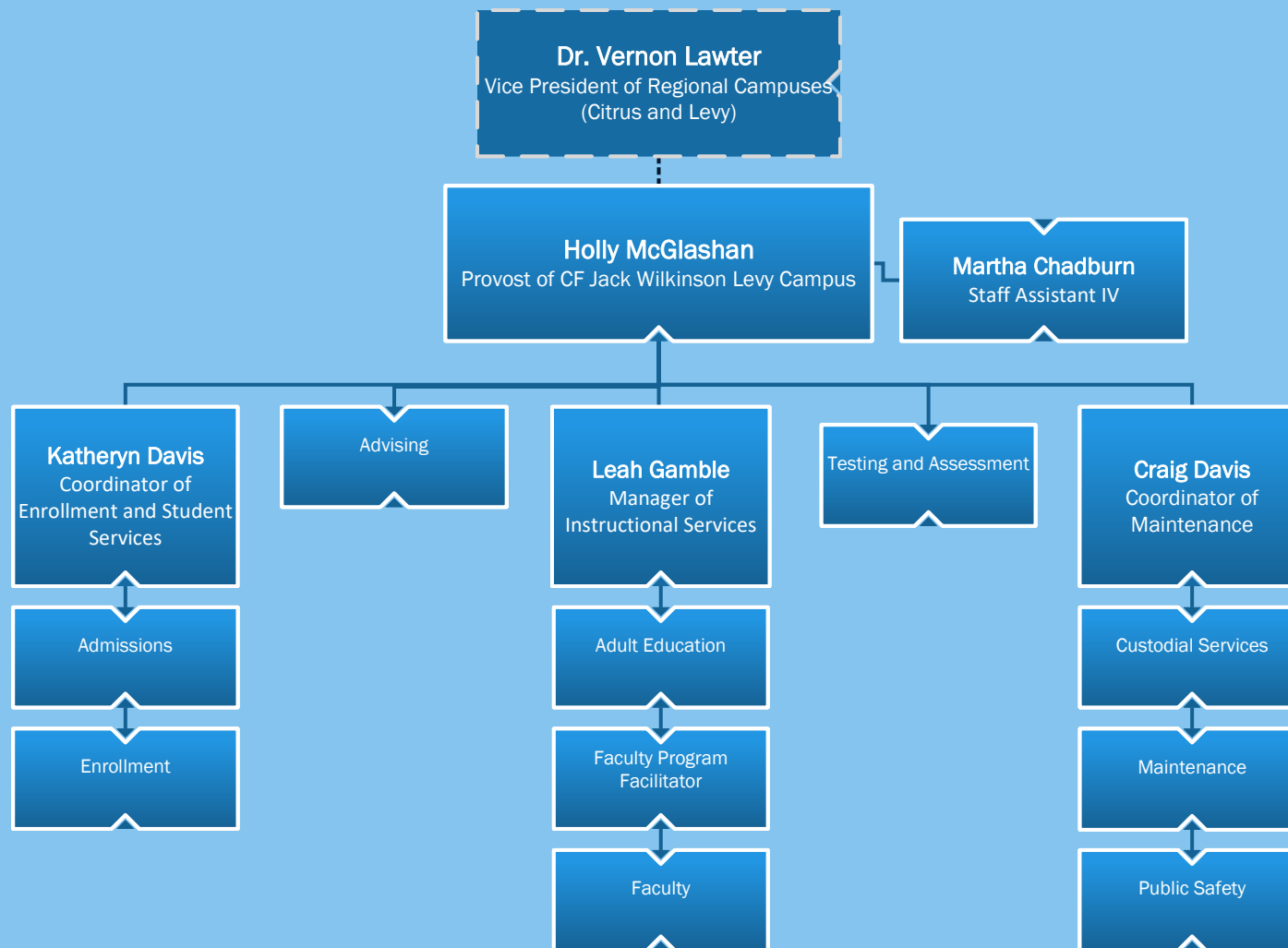


CF WILTON SIMPSON CITRUS CAMPUS

Continuous Notice of Nondiscrimination: College of Central Florida does not discriminate against any person on the basis of race, color, ethnicity, religion, sex, pregnancy, age, marital status, national origin, genetic information, sexual orientation, gender identity, veteran status or disability status in its programs, activities and employment. For inquiries regarding nondiscrimination policies contact Dr. Mary Ann Begley, Title IX Coordinator, Ocala Campus, Building 3, Room 116, 3001 S.W. College Road, 352-291-4410, or Equity@cf.edu.

COLLEGE OF CENTRAL FLORIDA ORGANIZATIONAL CHART

CF REGIONAL CAMPUSES

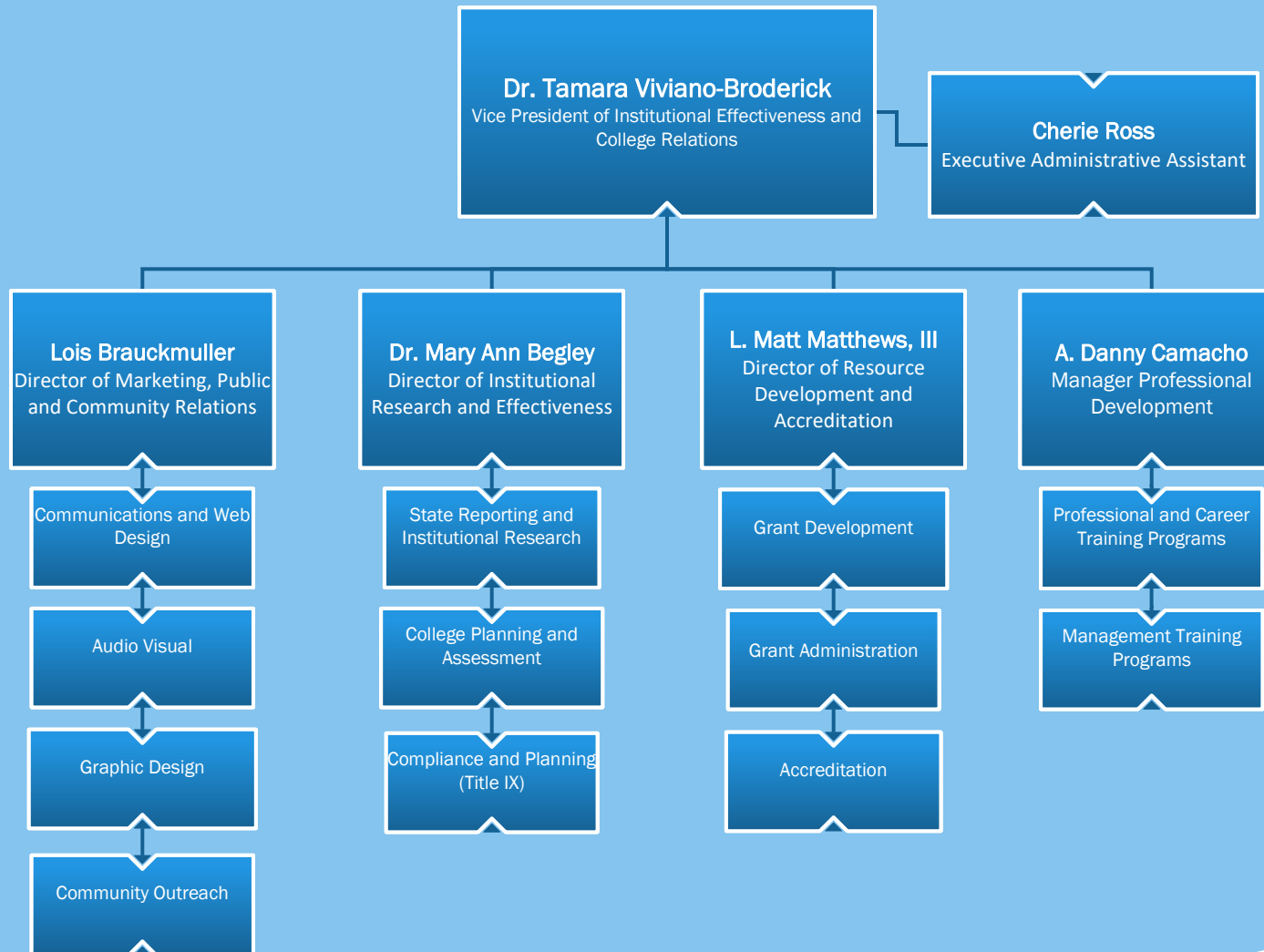


CF JACK WILKINSON LEVY CAMPUS

Continuous Notice of Nondiscrimination: College of Central Florida does not discriminate against any person on the basis of race, color, ethnicity, religion, sex, pregnancy, age, marital status, national origin, genetic information, sexual orientation, gender identity, veteran status or disability status in its programs, activities and employment. For inquiries regarding nondiscrimination policies contact Dr. Mary Ann Begley, Title IX Coordinator, Ocala Campus, Building 3, Room 116, 3001 S.W. College Road, 352-291-4410, or Equity@cf.edu.

COLLEGE OF CENTRAL FLORIDA ORGANIZATIONAL CHART

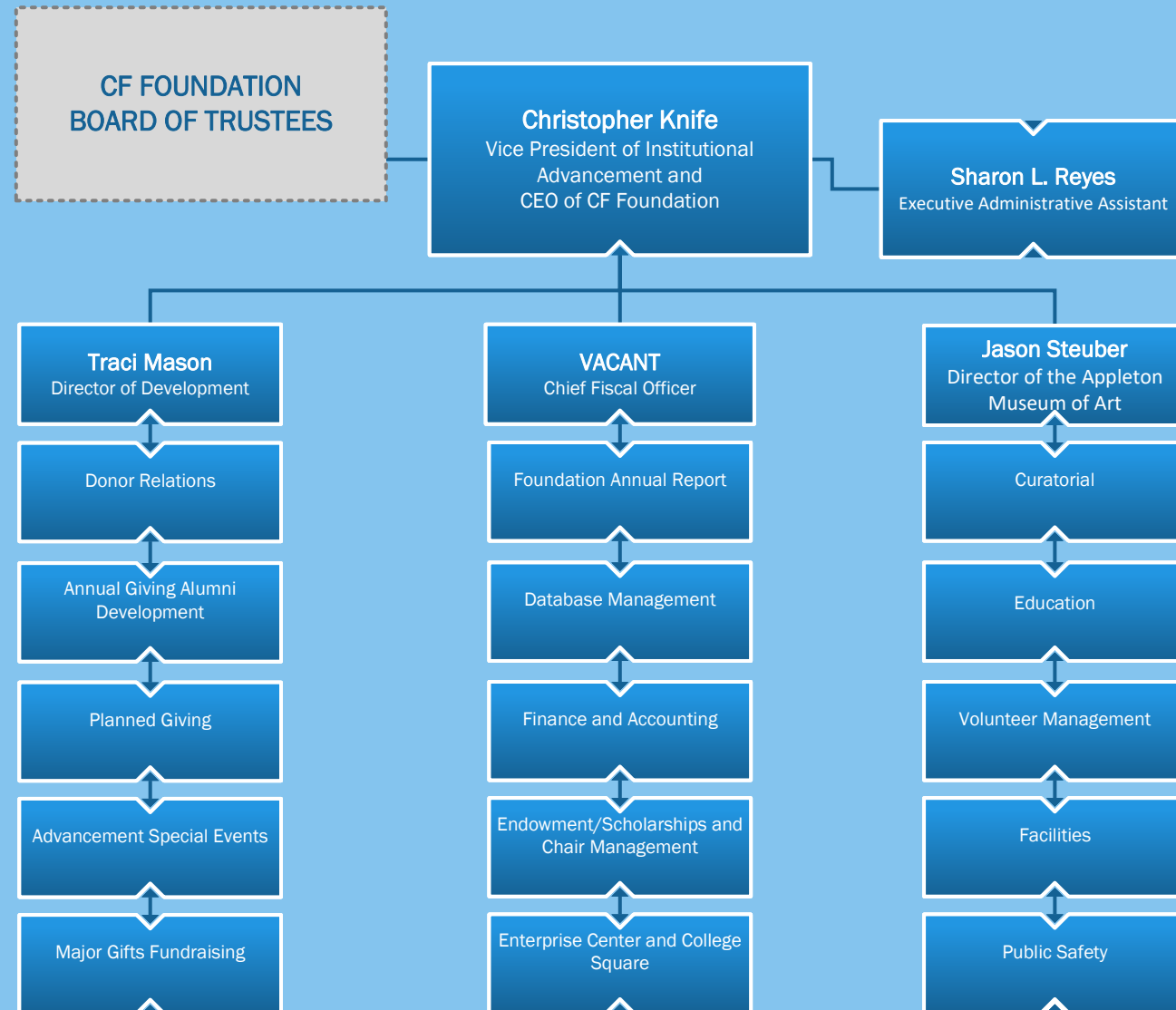
DIVISION OF INSTITUTIONAL EFFECTIVENESS AND COLLEGE RELATIONS



Continuous Notice of Nondiscrimination: College of Central Florida does not discriminate against any person on the basis of race, color, ethnicity, religion, sex, pregnancy, age, marital status, national origin, genetic information, sexual orientation, gender identity, veteran status or disability status in its programs, activities and employment. For inquiries regarding nondiscrimination policies contact Dr. Mary Ann Begley, Title IX Coordinator, Ocala Campus, Building 3, Room 116, 3001 S.W. College Road, 352-291-4410, or Equity@cf.edu.

COLLEGE OF CENTRAL FLORIDA ORGANIZATIONAL CHART

CF FOUNDATION



Continuous Notice of Nondiscrimination: College of Central Florida does not discriminate against any person on the basis of race, color, ethnicity, religion, sex, pregnancy, age, marital status, national origin, genetic information, sexual orientation, gender identity, veteran status or disability status in its programs, activities and employment. For inquiries regarding nondiscrimination policies contact Dr. Mary Ann Begley, Title IX Coordinator, Ocala Campus, Building 3, Room 116, 3001 S.W. College Road, 352-291-4410, or Equity@cf.edu.