



COLLEGE *of*
CENTRAL
FLORIDA

TRICOUNTY COUNSELORS MEETING

Nov. 7, 2024

Vintage Farm Campus



Call to Order

COLLEGE *of* CENTRAL FLORIDA

Marissa Brown

Assistant Director of Admissions and Student Recruitment



Welcome and Campus Updates

COLLEGE *of* CENTRAL FLORIDA

Dr. Tammi Viviano-Broderick, *Vice President Institutional Effectiveness and College Relations*

Dr. Stephanie Cortes, *Associate Vice President Health Sciences*



Equine Studies

COLLEGE *of* CENTRAL FLORIDA

Marie Davidson

Equine Studies Program Manager



EQUINE STUDIES PROGRAM

COLLEGE OF CENTRAL FLORIDA

Credentialing includes:

- College Credit Certificates
- Associate of Science Degrees
- Bachelor of Applied Science Degree

Coursework includes:

- Hands-on Horses
- Scientific Exploration
- Integration of Technology
- Industry Exposure & Networking
- Lecture
- Internship & Volunteer Opportunities



**2024 TRICOUNTY
COUNSELORS MEETING**

The 2023 Equine Industry Economic Impact Study conducted by the American Horse Council

\$177 Billion

contributed to the US economy in 2023

Sectors generating the most significant impact include:

- Competition – \$37.3 Billion
- Recreation – \$36.7 Billion
- Racing - \$36.4 Billion
- Traditional Work Horses - \$6.4 Billion
- Equine Assisted Services - \$1,551 Million
- Rescues & Sanctuaries - \$325 Million

2.2 Million

equine-related jobs

Direct or indirectly related to the horse

- Examples include veterinary related careers, breeder, trainer, caretaker, manager, sales and marketing, insurance, real estate, accounting, nutritionist, journalist, therapist, equine assisted, education, event organizing, tourism, truck drivers, construction, regulatory, pharmaceuticals, accounting, syndication, etc.

Additional AHC National Survey Information

- **\$1.22 Billion in salaries, wages and benefits**
- **6.65 Million horses in the US (FL is #3 in the US)**
- **62.5% horse owners own or lease property**
- **\$12.5 Million land leased for equine related purposes**
- SEE: www.horsecouncil.org



ALL FLORIDA EQUINE

335,000
Horses - Ranks **3rd** in
U.S. horse population

\$12.8 Billion
Total Economic
Impact

Total
Employment
Effect:
**112,000
Jobs**

1 in **5** households
participate in
equine activities

561,000
acres used for
horse-related
purposes



Florida Statistics

20% of all jobs in Marion County are related to the horse industry!

Thank you to Tammy Gantt of the Florida Breeders and Owners Association for this graphic.

DEGREES OFFERED

- **College Credit Certificates**
 - Equine Technician – 15 credits
 - Equine Assistant Management/Management & Evaluation prep for Equine Industry Certificate – 24 credits
- **Associate of Science Equine Studies Degrees**
 - Equine Business Management – 60 credits
 - Equine Exercise Physiology – 60 credits
- **Bachelor of Applied Science**
 - Business and Organizational Management with an Equine Specialization – 120 credits
(or 60 additional credits beyond the AS)



Academics, Hands-On Training, and Industry Exposure



2024 TRICOUNTY
COUNSELORS MEETING

Integration of Technology



ASSOCIATE OF SCIENCE - EQUINE STUDIES

Business Management & Equine Exercise Physiology Specializations

General Education credits are required in addition to the following:

Core Equine Classes:

- Anatomy & Physiology
- Behavior & Psychology
- Health Care
- Nutrition
- Handling & Safety
- Equine Co Op



Electives (pick 3 *):

- Intro to Equine Science
- Equine Sport & Competition
- Equine First Aid
- Elementary Spanish
- Ag/Equine Careers
- Other select Agribusiness courses

Exercise Physiology Specialization:

- Physiology of Equine Exercise
- Injury & Rehabilitation of Sport Horses
- Equine Locomotion
- Equine Manual Therapies

Business Management Specialization:

- Equine Business Management
- Equine Reproduction
- Equine Sales & Marketing
- Equine Conformation Analysis





Exploring the Science



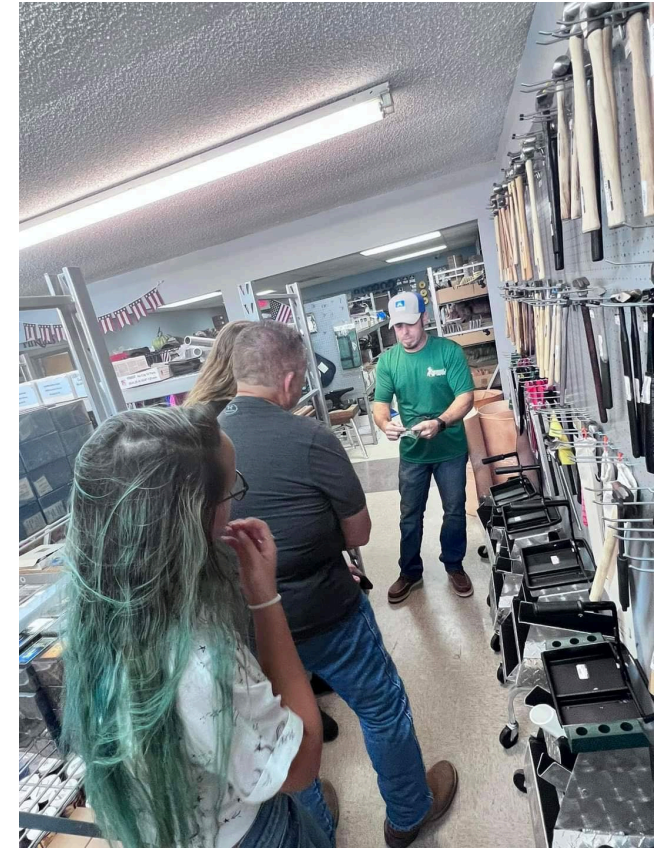
Veterinary Related Careers



**2024 TRICOUNTY
COUNSELORS MEETING**

COLLEGE CREDIT CERTIFICATES

- Equine Technician:
 - Behavior & Psychology
 - Health Care
 - Nutrition
 - Handling
 - Introduction to Equine Science
- Equine Assistant Management in preparation for taking the Equine Management and Evaluation Certificate Industry Exam:
 - Behavior & Psychology
 - Health Care
 - Equine Business Management
 - Handling
 - Sales & Marketing
 - Conformation
 - Sport & Competition
 - Ag/Equine Careers



Handling, training and care of horses



Business & Industry Exposure, Internships, and Networking



**2024 TRICOUNTY
COUNSELORS MEETING**



**COLLEGE of
CENTRAL
FLORIDA**

Volunteering, Public Service, Employment, Camps, Field Trips



OUTSTANDING GRADUATES & STUDENTS

Did you know that there are graduates and students of the College of Central Florida's Equine Studies Program keeping the industry running all around you here in Ocala and across the country?

Colin Brennan, Kaylynnne Brennan, Blaine Isaacs, Christy Whitman, Maxine Pina, Lauren Bandi, Dana Noga, Isaac Lefkowitz, Anna Toomey, Jenna Brown, Brianna Gonzalez, Rachel Devick, Sara Claussen, Ari Welter, Jackie Phillips, Gigi Rosado, Frenchie Bisiaux, Lara Sheppard, Emily Pettit, Amy Stewart, Kayla Olsker, Maria Burgos, Megan Vainosky, Elliot Timmons, Sally Griner, Hannah Wray, Bailey McClellan, Tori Myers, Keli Wakeley, Annabelle Marcey, Aubrey Tagliamonte, Aubry Watts, Olivia Glenn, Aby Syfrett, Destinie Serfass, JoVonno Bellot, Felicity Bennett, Janell Brenner, Kayla Olsker, Korianne Wheatley, Sydney Clute, Jeanie Mitchell, Gerver Cifuentes, Juanita Sanchez, Carol Siflinger, Nina Baker, our own Katie Bigge and many others!

Our Amazing Equine Industry Advisory Board

- Colin Brennan, Colin Brennan Bloodstock & FTBOA Board
- Tammy Gantt, Florida Breeders and Owners Association
- George Isaacs, Bridlewood Farm & President of FTBOA
- Dr. Thomas Lane, University of Florida, ret.
- Brenda McDuffee, Companion Laser/Diamedical
- Jose Madera, Peterson & Smith Equine Hospital and Complete Care
- Tik Maynard, Copperline Farm

PROFESSIONALLY EXPERIENCED FACULTY

Marie Davidson, MED

Associate Professor/Program Manager
MED Equestrian Ed & Bilingual/Multicultural Ed
USET International 3 Day Event Rider,
Trainer & Rehab Manager
Former Vet Tech & Office Manager

Kathryn Bigge, MED

Adjunct Faculty
MED Equestrian Education
Pinto World Champion
World Ranch Champion
Owner/Manager Online Used Tack Sales

Madelyn Smythe Bucci, MS

MS University Of Florida
Lab Manager University of Florida
Geneticist and Eventing Competitor

Dr. Angie Adkin

Associate Professor
MS and PhD Equine
Behavior/Nutrition/Reproduction
All Around Quarter Horse Competitor and Breeder
Animal behaviorist/trainer at Gainesville Zoo
Podcast host & Creator

Corinne Wiygul, MED

Adjunct Faculty
MED Equestrian Education
Carded Buckskin Judge
Stock Horse Competitor

Ashley Johnson, MS

MS Harvard
Owner, Manager, Trainer
Ashland Equestrian Eventing & Rehab

Agribusiness

COLLEGE *of* CENTRAL FLORIDA

Tavis Douglass

Agribusiness Program Manager



Agribusiness Management

Associate in Science (A.S.) Agribusiness Management - 60 Credits

- Provides students with the scientific, business and economic foundations to be successful in agricultural related enterprises
- Classroom, experiential learning and online activities prepares students for modern agricultural production systems



**2024 TRICOUNTY
COUNSELORS MEETING**

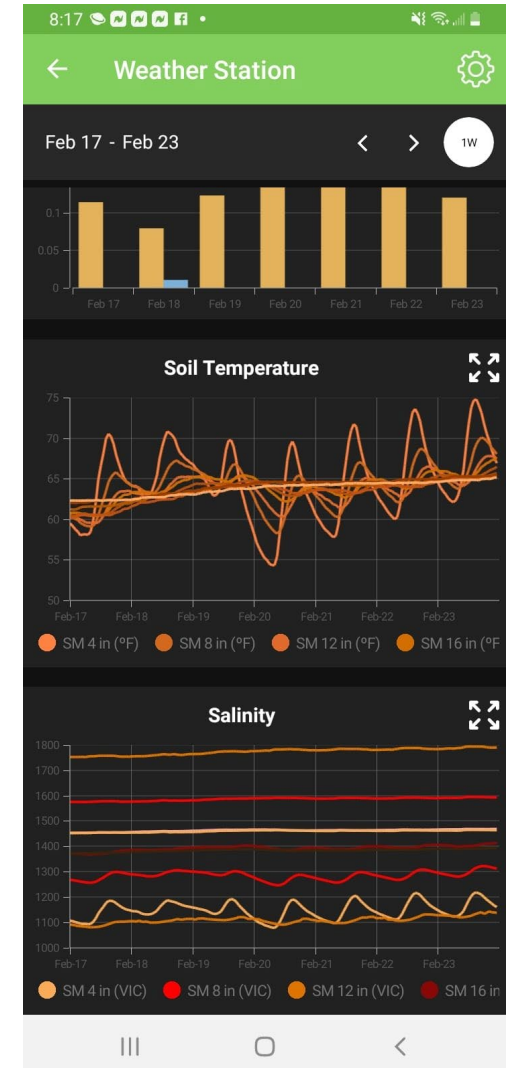


**COLLEGE of
CENTRAL
FLORIDA**

Agribusiness Management

Bachelor of Applied Science in Business and Organizational Management, Agribusiness Management Specialization (60 Credits)

- Designed as a 2-year extension of the A.S. in Agribusiness Management degree
- Solve complicated production and business issues, and understand the challenges and opportunities facing the modern food, feed, fiber and natural resource industries.



Agribusiness Management CC Certificates

Horticulture and Landscape Professional (18 credits)

- Designed for students to become proficient in hands-on skills in general horticulture knowledge, plant sciences and modern growing systems.



**2024 TRICOUNTY
COUNSELORS MEETING**



**COLLEGE of
CENTRAL
FLORIDA**

Agribusiness Management CC Certificates

Livestock Production Management (30 credits)

Study a wide array of livestock topics focused on nutrition and pasture management as well as physiology and behavior for stock animals in north Central Florida.



**2024 TRICOUNTY
COUNSELORS MEETING**



**COLLEGE of
CENTRAL
FLORIDA**

Get college credit for your high school classes!

STEP 1

Complete your 3-year Agritechnology program in high school and earn the appropriate industry certifications

FNGLA-Certified Horticulture Professional (6 credits)

Animal Science Industry Certification (3 credits)

**Agritechnology Specialist/
Agritechnology Associate/
Agritechnology Systems Associate** (6 credits)

STEP 2

Apply credits toward CF's Associate in Science in Agribusiness Management

STEP 3

Continue on to CF's Bachelor of Applied Science in Business and Organizational Management, *Agribusiness Specialization*



Scan to learn more



COLLEGE of CENTRAL FLORIDA



Vintage Farm

COLLEGE *of* CENTRAL FLORIDA

Jacob Dorland
Vintage Farm Manager



Business and Organizational Management, B.A.S.

Nancy Abshier
abshiern@cf.edu



Specializations: Business and Organizational Management



- Business and Organizational Management
- Agribusiness Management
- Management Information Systems
- Health Care Management
- Public Safety Administration
- Logistics & Supply Chain Management
- Equine Studies
- Accounting
- Human Resources Management

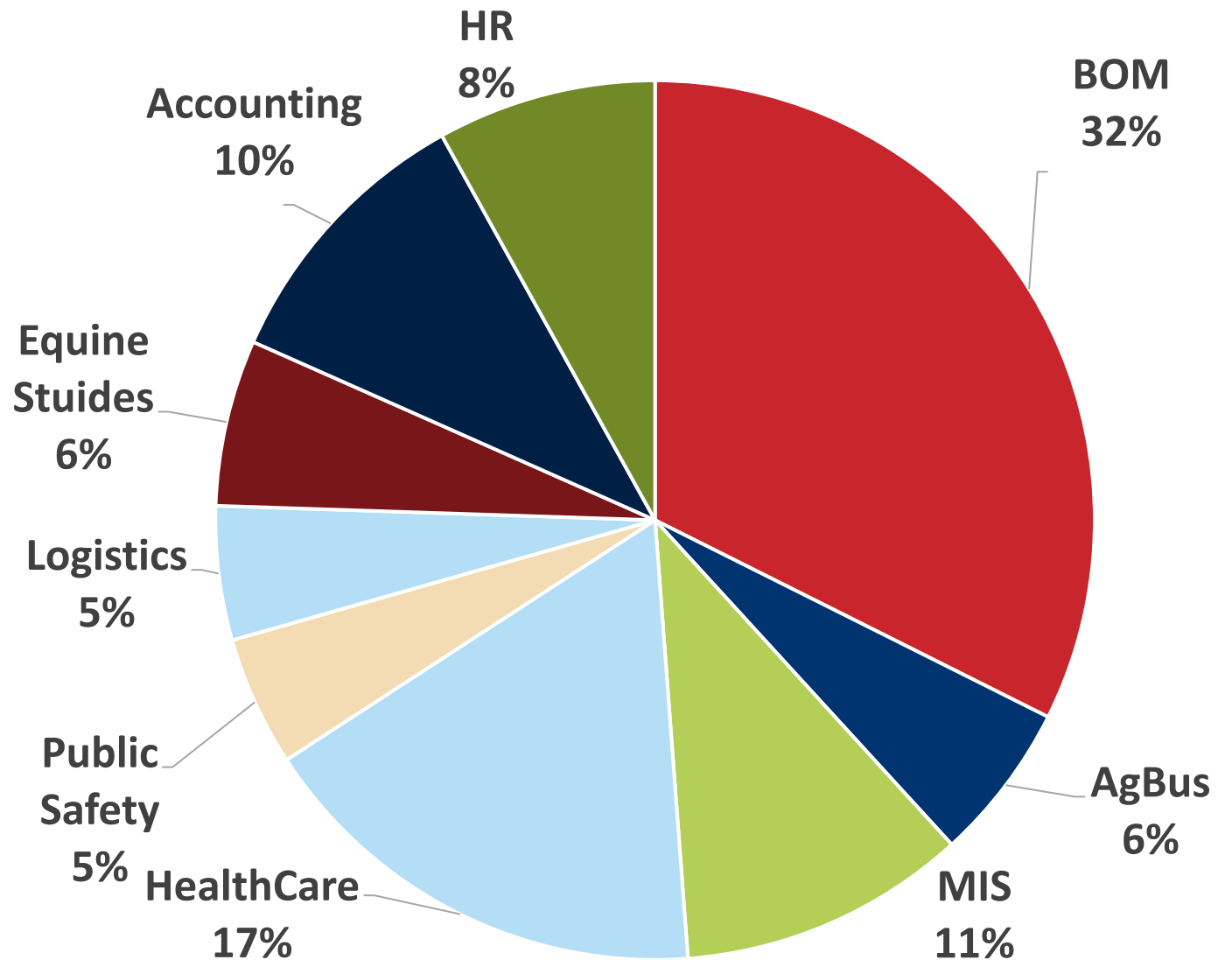
Advanced Technical Certificates

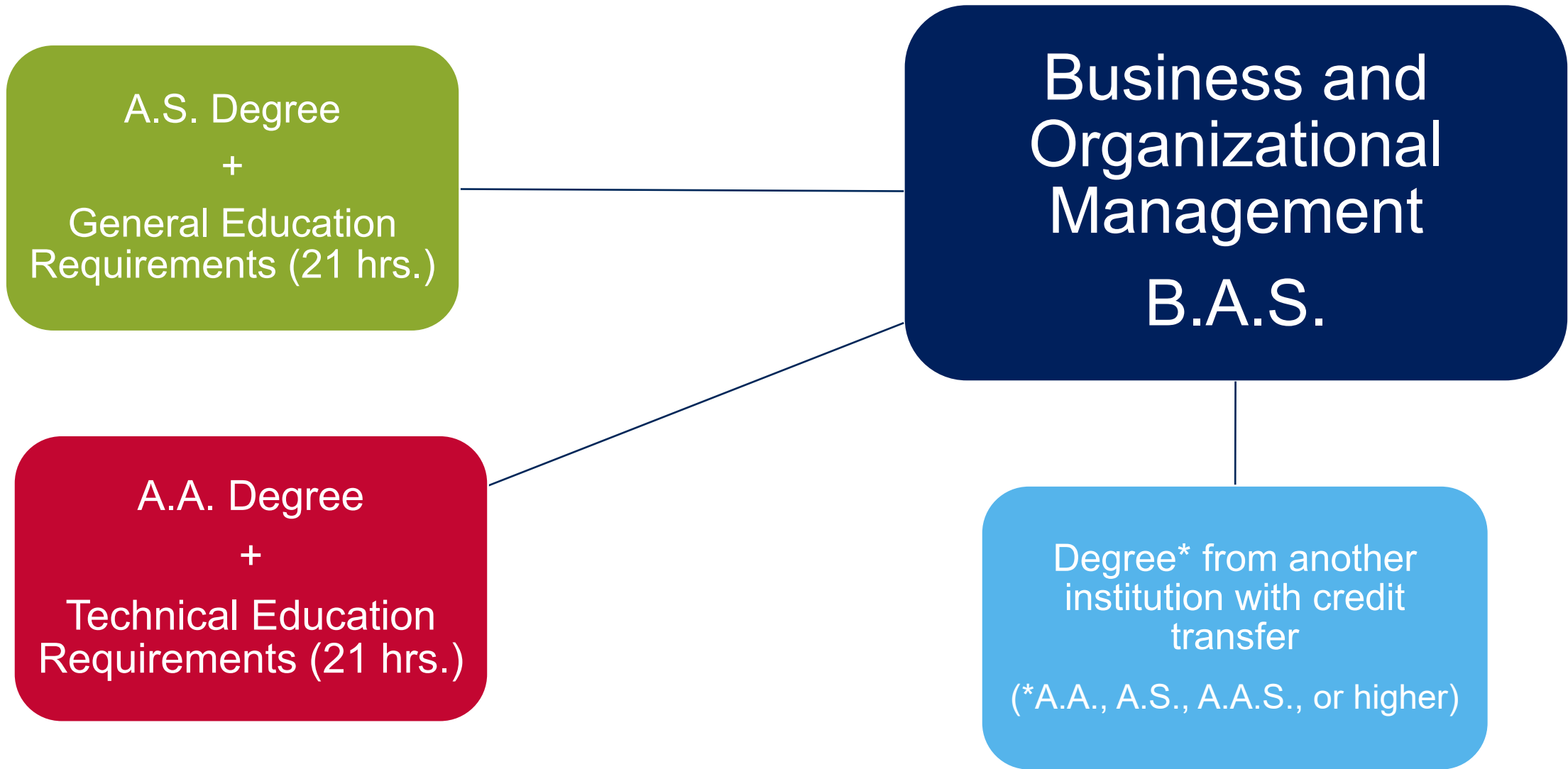
- Accounting Management
- Basic Health Care Management
- Basics of Agribusiness
- Compensation and Benefits
- Data Security
- Emergency Management
- Equine Industry Management
- Logistics and Supply Chain Management



Program Statistics

- ✓ More than 670 students enrolled
- ✓ Making up approximately 8.5% of the College's overall enrollment
- ✓ 63 unique courses offered in a variety of formats—equating to 140 actual classes
- ✓ Students have a high placement in field and continuing their education (2% higher than FCS average)





B.A.S.: Business and Organizational Management

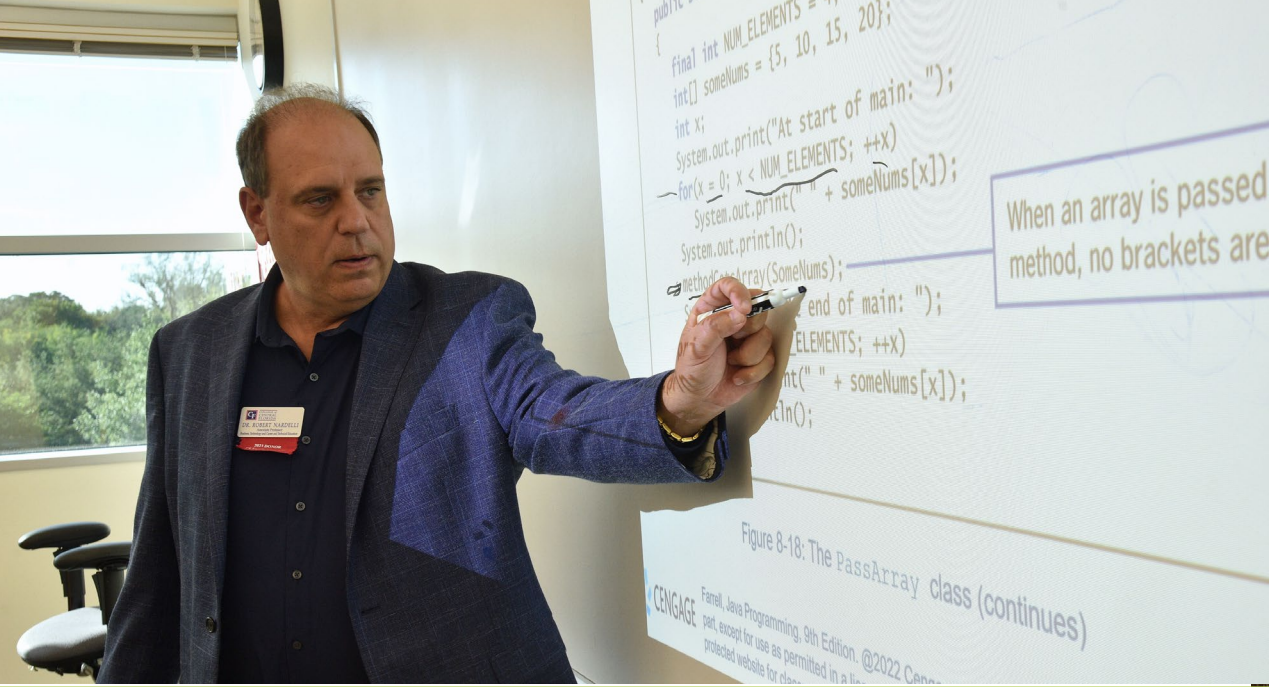
Core Business Course



Supporting Business Courses



Specialization Courses



Great Faculty! Great Facilities!



Class Formats: BAS Has 8-week Terms



Hybrid



Online



Live Online

College Schedule of Classes
 Search Result for Semester FA 2022
 Click: [Return to Search](#) to search again

Course	Sect	Title	Instruct Method	Campus	Instructor	Seats	Cred	Reqmts	Textbk	Dates	Days	Beg	End	Bldg	Room	Subsession/AltCal	Lab Fee
MAN3240	20	Applied Organizational Behavior	Hybrid (Online & Campus)	Online 0001	Moody C	Closed: 20 / 20	3.00	View	View	10/10/2022 - 12/01/2022						FB	\$0
			Onsite Meeting	Ocala Campus						10/10/2022 - 12/01/2022	__W__	5:30p	8:15p	0040	207		

Comments: LIVE Class. Meets on Ocala Campus (see time above). In-person & online required. Go to MyCF Academics tab to login to Canvas. More info: cf.edu/elearning. Email DLhelp@cf.edu for help.
 Requirements: BACC

Sample of 2024-25 Internship Sponsors

Advent Health	Beau Broker Realty	Blue Heron CPA	Citrus County BOCC	City of Ocala	Collier, Jernigan, Eastman & Zalick, P.A.	Custom Window Systems
DeMeola Temple CPA Group	Fifth Judicial Circuit	FixIT Tech (IT)	Florida Thoroughbred Association	Gill Logistics	H2 Advisors	HCA Florida Citrus
James Moore & Company	Marion County BOCC	Marion County Clerk of the Court	Marion County Public Schools	Marion Therapeutic Riding Association	Purvis Gray	R+L Global Logistics
Simply IT	Strive Physical Therapy	Tampa General Hospital Crystal River	UF/IFAS (Agriculture Science)	The Villages Health	Wiley Productions	World Equestrian Center

CF Success Stories: Getting GREAT jobs!



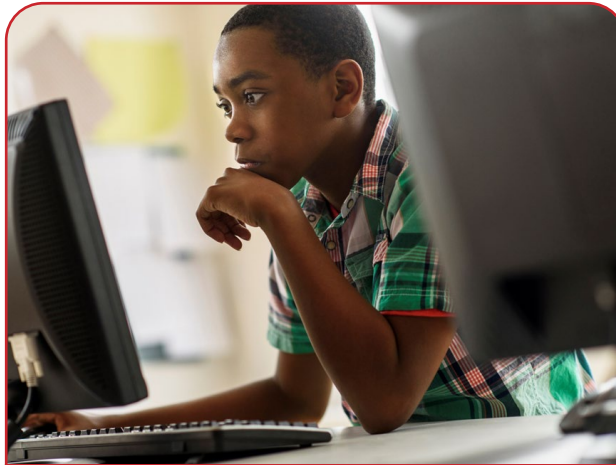
CF Success Stories: Continuing On!



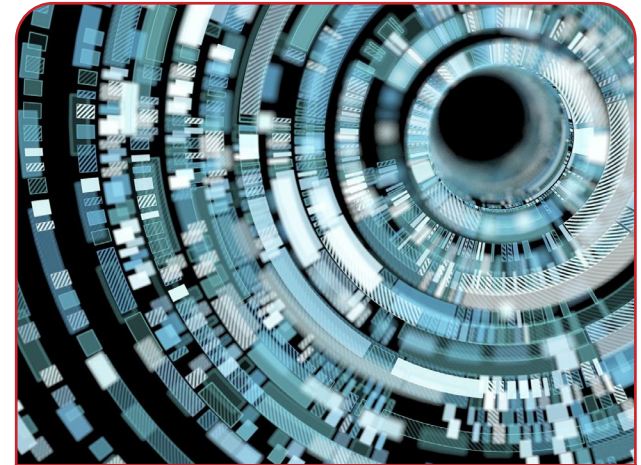
2024-25 Charles P. (Chuck) Hiatt Endowed Chair Upcoming Events



Open
Houses



Webinars



Live Events



2024 TRICOUNTY
COUNSELORS MEETING



Registration is EASY!

<https://www.CF.edu/BusTechEvents>

November 2024

MON
4

Nov. 04, 12:30 p.m. - 1:30 p.m.

Information Session for B.A.S. in Business and Organizational Management >

Ocala Campus 3001 SW College Rd, Ocala

Join advisors, administrators and faculty at the Ocala Campus, Ewers Century Center, Room 101 on Monday, Nov. 4 for an information session about the Bachelor of Applied Science in Business ...

Continue reading



THU
7

Nov. 07, 12:30 p.m. - 1:30 p.m.

Get LinkedIn Virtual Information Session >

Online

Learn how to optimize your LinkedIn profile, connect with industry professionals and unlock career opportunities. Gain valuable insights and actionable tips to stand out in the job market. Register now ...

Continue reading



WED
13

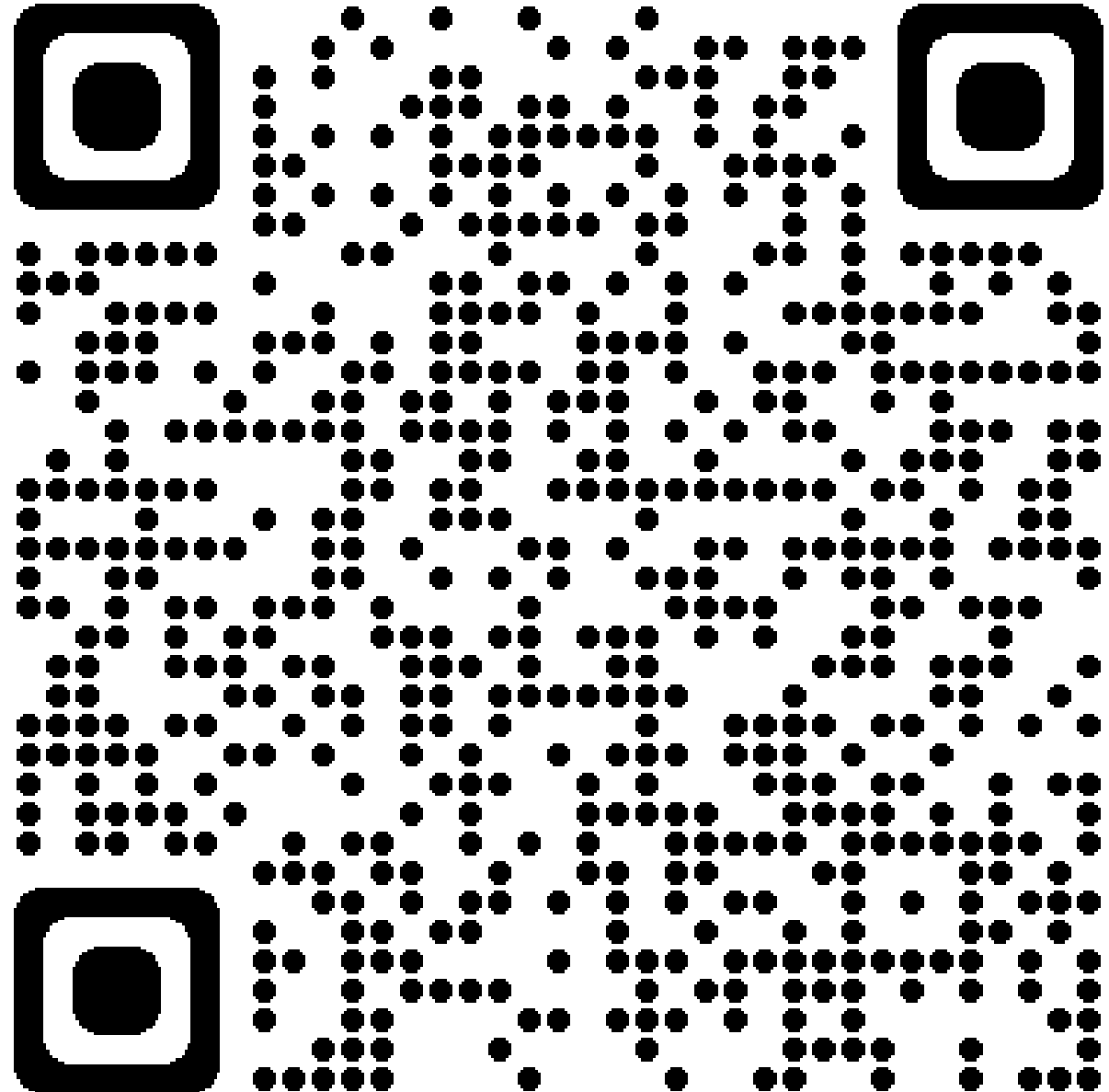
Nov. 13, 2:00 p.m. - 4:00 p.m.

Talent Center Open House >

Ocala Campus 3001 SW College Rd, Ocala

Students are invited to a Talent Center open house at the Ocala Campus, Enterprise Center (Building 42), Suite 101 on Wednesday, Nov. 13, from 2-4 p.m. Stop by and the ...

Continue reading



BAS Faculty Offices

Nancy Abshier
Program Chair, BAS
Building 40, Office 105B
abshiern@cf.edu | x. 1387

Linda Huertas
Staff Assistant III, BAS
Building 40, Office 105
huertasl@cf.edu | x. 1456





Career Pathways

Articulation Agreements

Cori Wiygul, *Career Pathways Coordinator*

What is the Career Pathways Program?

Career Pathways offers students the opportunity to earn FREE college credit by successfully completing career and technical courses (electives) while in 9th-12th grades.

College credit is awarded based on articulation agreements made between the College of Central Florida and surrounding school districts.

What are CTE Electives ?

- Agriculture
- Business
- Computers
- Criminal Justice
- Digital Media
- Early Childhood Education
- Engineering
- Health
- Logistics
- Welding



1

Step 1

Complete 3 related courses and maintain a “B” average in those courses

2

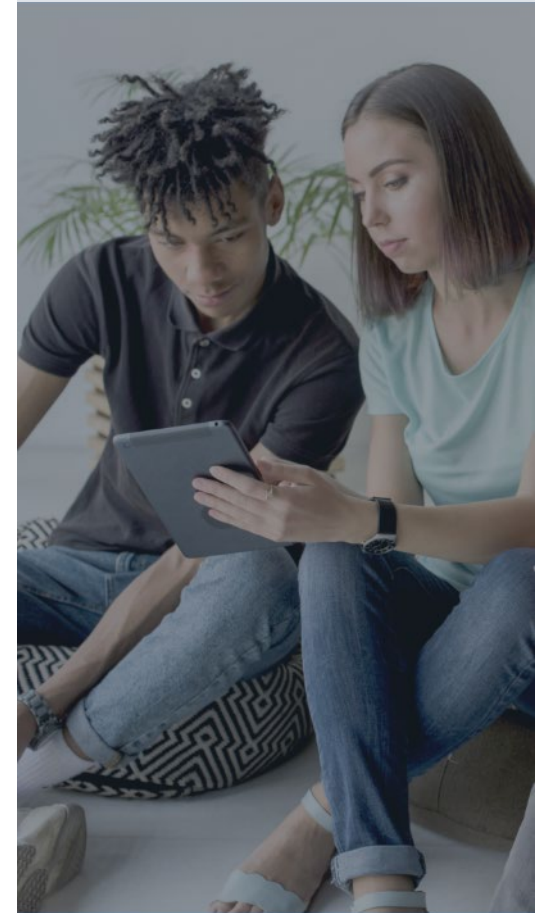
Step 2

Show competency by attaining the required industry certifications at your high school or complete an “Articulation Exam”

3

Step 3

Enroll at CF in an A.S. Degree & Contact the Career Pathways Coordinator to process credits, complete a Career Pathways Credits ticket (found on the CF website)



AA Degree

An Associate in Arts Degree allows students to transfer to a college or university as a junior.

An Associate in Science Degree prepares students to enter the labor market with technical skills in specific program areas.
**Students must declare an A.S. degree for Career Pathways credit

AS Degree

A.S. Degree Options at CF with articulation agreements



Accounting Technology
Agribusiness Management
Business Administration
Computer Information Technology
Criminal Justice
Dental Assisting
Digital Media Technology
Early Childhood Education
Engineering Technology
Equine Studies
Health Information Technology
Nursing
Office Administration
Physical Therapist Assistant
Supply Chain Management

How does it all fit together?

CTE Electives = Opportunity for free college credit in a coordinating A.S. Degree through Career Pathways

Additionally, CTE Electives can qualify the student for the Bright Futures Gold Seal Vocational and CAPE Scholarships



Example – AG Completer

High School Classes - Digital Information Technology
Ag Foundations
Animal Science and Services 1 &2

College credits awarded:

AEB 2012 Principles of Agribusiness Management (3) *Industry certification*

AEB 2192 Farm Records & Accounts (3) *Industry certification*

ANS 1003 Introduction to Animal Science (3) *Industry certification*

OST 1100 Introduction to Word (3) *Industry certification or exam*



Thanks!

The College of Central Florida
Cori Wiygul wiygulc@cf.edu

**2024 TRICOUNTY
COUNSELORS MEETING**





COLLEGE of
CENTRAL
FLORIDA

Traditional Dual Enrollment & Collegiate Academy

—an equal opportunity college— Sarah Sandford, *Dual Enrollment Coordinator* 2024 - 2025



Sarah Sandford, Dual Enrollment Coordinator



- Professional Background
 - 20+ years in NYC Public Schools supporting students, families, teachers and administrators
 - Passionate about empowering students with choices for future success
- Quick Story
 - Sometimes being a counselor means being a coach, a cheerleader, and a friend
- Fun Fact
 - I may be a dual enrollment coordinator by day, but in another life, I'd be a food critic. Ask me about the best pizza, and I'll have opinions!

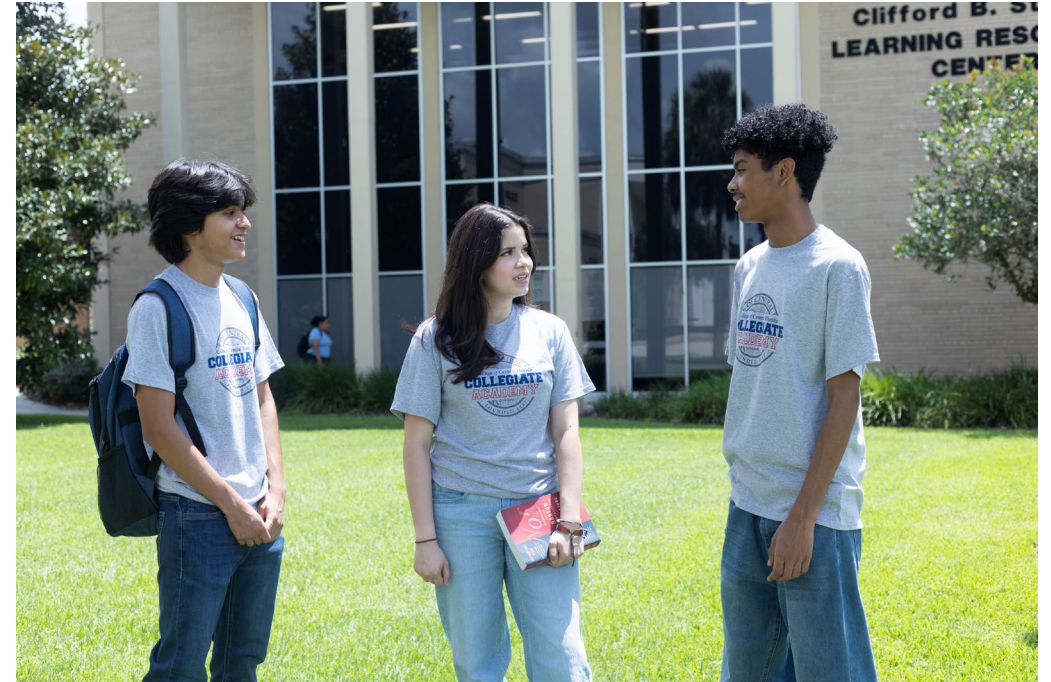
What is Traditional Dual Enrollment?

- A cooperative effort between CF and local secondary schools to provide enhanced learning opportunities.
- Qualified students may accelerate their college education through dual enrollment courses.
- Dual Enrollment enables high school students to take college courses that count for both high school and college credit.
- Students can still participate in high school activities!



What is Collegiate Academy?

- CF's Early College program that provides students an opportunity to earn their Associate in Arts or Associate in Science before graduating high school.
- Qualified students take classes **full time** at a CF campus or online.
- Realistic college experience that includes student activities and learning resources.
- Students can still participate in high school activities!



Eligibility Requirements for both programs

- High School or Middle School Unweighted G.P.A. of **3.0 or Higher**
- Passing Placement Test Scores

	Reading and Writing	Math
Digital SAT/PSAT	490	480
CLT	38	16

	Reading	English	Algebra
ACT	19	17	19
PreACT	22	18	22
SAT (& PSAT)	24	25	24
PERT	106	103	114

Eligibility requirements Continued

Traditional DE

- Previously completed 4 high school credits.

Collegiate Academy

- Complete 9th and 10th grade high school requirements*.

*High school requirements may vary across districts, schools, and individual students. Consult with your school counselor.

How to Apply



- Go to www.CF.edu/apply
 - Select High School DE Application
- *The application is FREE and only takes about 15 minutes to complete.

After Applying



- Students will get an email with their **CF Student ID Number** and admissions information within 7-10 days after applying
- Students can use their CF ID Number to log into the MyCF student portal

Required Admission Documents:

Private/Public School



Official High School Transcripts



Official Placement Test Scores



DE Parent Signature Page



Info Session Attendance Date



Self-Registration Agreement



Previous College Transcripts

Submitting Admission Packet

- Public/Private School Students
 - Turn in all required documents to the high school counselor – refer to checklist.
 - Transcript will be sent by the high school counselor.
 - Students must include a copy of official placement test scores to high school counselor, if not on file.

Only completed application packets will be accepted!

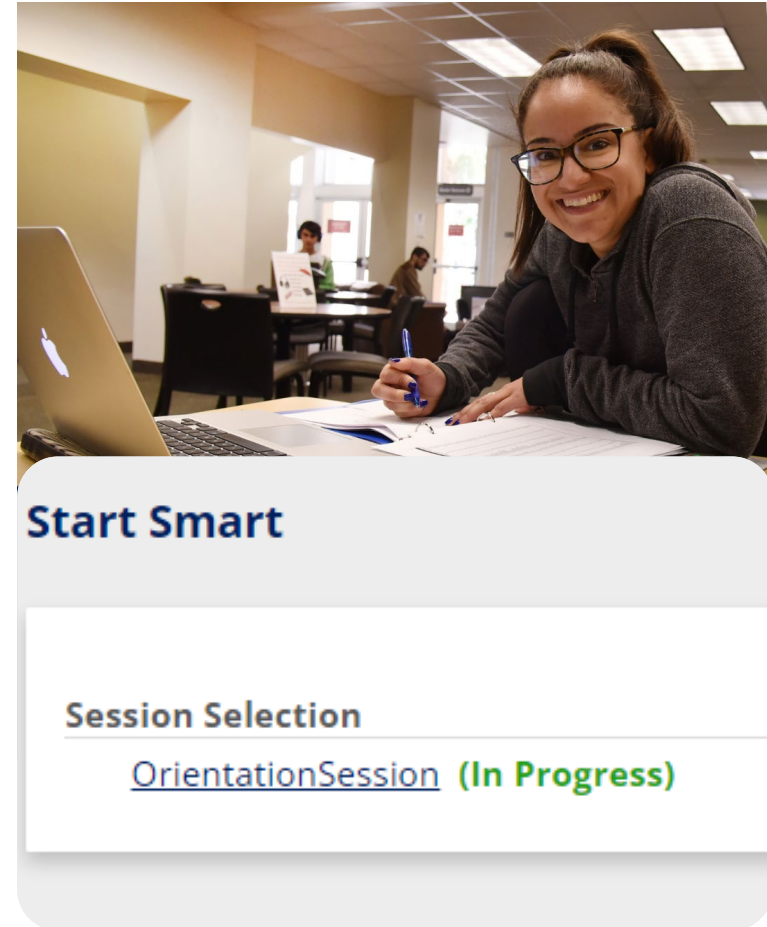
Patriots Mail

- Automatically issued after students are admitted
- Accessed through MyCF portal
- **Required** for all official college communication
- Free for life



Attending Orientation

- Once students are fully admitted to CF, they will receive their Patriots email.
- Patriots email is used to log in to the MyCF portal.
- Click on the “StartSmart” tab.
- Select an orientation session.
- Attend orientation, connect with their CF Advisor and register for classes!



Textbooks - FREE

Public School Students	Private School Students	Home Schools Students
<ul style="list-style-type: none">• Marion: Textbooks are mailed to the County School Board (MTI location).• Citrus and Levy: Textbooks are mailed to each school.	<ul style="list-style-type: none">• Textbooks are mailed to each school in all counties.	<ul style="list-style-type: none">• Textbooks are mailed to each student in all counties.

Maintaining Eligibility

01

Be enrolled in a middle or high school (public, private or home school).

02

Do not receive a D, F, or FF grade in any course.

03

Do not withdraw from more than one class.

04

Traditional: Do not register for more than allowed credit limit.
Collegiate: Remain a full-time student at CF.

Traditional Dual Enrollment – Allowed credit hours

Year	Fall	Spring	Summer
6-8 Grade	3 credits	3 credits	0 credits
Freshmen	6 credits	6 credits	6 credits
Sophomores	6 credits	6 credits	9 credits
Juniors	9 credits	9 credits	12 credits
Seniors	16 credits	16 credits	0 credits

*Students cannot take Dual Enrollment or Collegiate Academy classes the summer after high school graduation.

Collegiate Academy – Minimum credit requirement

		Recommended	Minimum	Maximum
11 th Grade	Summer	SLS1122	0	12
	Fall	15	12	18
	Spring	15	12	18

		Recommended	Minimum	Maximum
12 th Grade	Summer	See advisor	0	12
	Fall	15	12	18
	Spring	15	12	18

*You cannot take Dual Enrollment or Collegiate Academy classes the summer after you graduate high school.

Collegiate Academy – Sample Student Schedule

	Monday	Tuesday	Wednesday	Thursday	Friday
8:15-9:00	Bus Leaves WPHS to CF				
9:00-9:30	Grab and Go Breakfast				
9:30-10:45	Study or Instructor Office visit	AMH2020 (Or State Core Social Science Class)	MAT1033 (Or State Core Mathematics course)	AMH2020 (Or State Core Social Science Class)	MAT1033 OR MAC1105 (Or State Core Mathematics course)
11:00-12:15	HUM1020 (Or State Core Humanities Course)	ENC1101 (Or Core Communications Course)	HUM1020 (Or State Core Humanities Course)	ENC1101 (Or Core Communications Course)	EVR1001 (Or State Core Natural Science Course)
12:15-12:30	LUNCH				
12:30-2:15	College Activity Hour	Study Time or Instructor Office visit	College Activity Hour	Study Time or Instructor Office visit	Study Time or Instructor Office visit
2:15	Bus Leaves for WPHS				

Dates and deadlines: Admissions and Registration Calendar



Add and drop
deadlines



Registration start
dates



Withdrawal
deadlines



Course specific
deadlines – Listed
in the syllabus!

Semesters and meeting types

TERM	FALL	SPRING	SUMMER
C	August – December	January – May	May – August
A	August – October	January – March	May – June
B	October – December	March – May	June – August

In-Person	Online	Live Online (ZOOM)	Hybrid	Hybrid-Flex
-----------	--------	--------------------	--------	-------------

DE Program Contact information

Email

➤ dualenrollment@cf.edu

Phone

➤ General DE: 352-854-2322,
ext. **1241**

DE Coordinator Contact Information

Sarah Sandford

Email

➤ Sandfors@cf.edu

Phone

➤ General DE: 352-854-2322,
ext. **1386**

Financial Aid/ Veterans Affairs

COLLEGE *of* CENTRAL FLORIDA

Sherie Whitehead, Assistant Director of Financial Aid

Eric Zimmer, Veteran's Affairs Specialist



COLLEGE *of*
CENTRAL
FLORIDA

2024-2025 FAFSA Recap

- We survived the challenges of the 24/25 FAFSA with your help.
- The Department of Education made the biggest updates for the 24/25 FAFSA in over 40 years.
- Locally, FAFSA completions are caught up.
- We are seeing a trend of increased enrollment that is common in other state colleges, which means those FAFSA challenges have not discouraged our local students from continuing on in their education.

As of Nov. 1, CF
has received

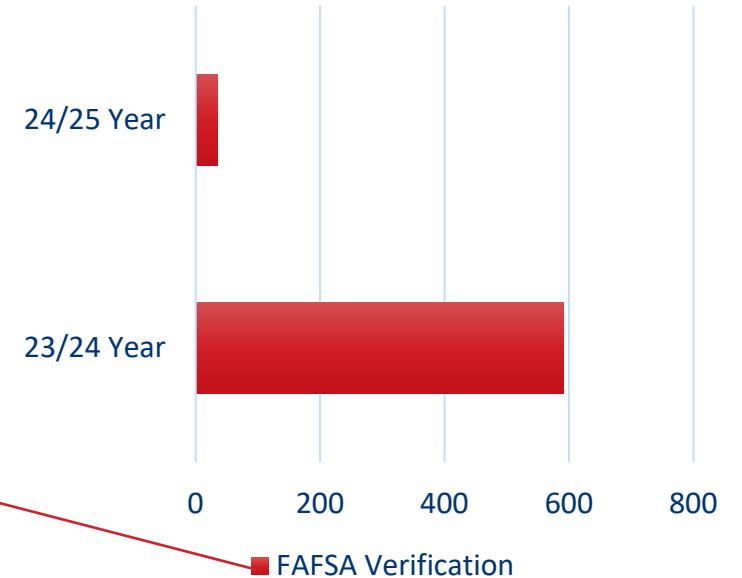
6,800

completed FAFSAs

FAFSA Moving Forward

- The majority of FAFSA changes are complete.
- In 25/26 year, expect to see a few updates to the wording to clarify some of those tricky questions.
- Federal Student Aid is beta testing the FAFSA for select schools and students. Federal Student Aid sent representatives to monitor the FAFSA process and completion to ensure a smooth rollout in December.
- The benefit of the **FAFSA Simplification** can be seen in the decrease of verifications. In the 23/24 year, 592 families/students were selected for verification while in the 24/25 year only 35 were selected for verification.

FAFSA Simplification



Why CF?

- Top 1% in the nation for affordability.
- The amount of PELL is the same no matter where the student attends.
- CF offer robust scholarships through the support of amazing local donors.
- Bright Futures Medallion: 75% pays 100% at a state college
- Veterans Success Center on campus
- CF's Financial Aid team curates Financial Aid Information Nights at the local high schools
- In the spring, we will be holding FAFSA Workshops. If you do not already have a scheduled event, please reach out to us and we can get an event scheduled.



ACCESSIBILITY

&

COUNSELING

CENTER

(ACC)

COLLEGE *of* CENTRAL FLORIDA

Cindy Pfriender

Director of ACC



**COLLEGE *of*
CENTRAL
FLORIDA**

WHO
WHAT
WHERE
WHEN
WHY

- **Who is eligible for services**
- **What services are available**
- **Where students apply**
- **When students register**
- **Why is accessibility important**

WHO ELIGIBLE FOR SERVICES

- Any student with a documented disability.
- Section 504 defines a disability as a condition that substantially limits one or more life activities such as learning, walking, seeing, hearing, breathing, caring for oneself, and working.

EXAMPLES OF DISABILITIES

Learning Disability

Speech Impairment

Anxiety

ADHD

Depression

Autism Spectrum Disorder

Deaf/Hard of Hearing

Visually Impaired

Orthopedic Impairment

WHAT KIND OF SERVICES DO STUDENTS RECEIVE

- assistance with admissions and financial aid applications
- appropriate classroom and testing accommodations
- academic, career, and personal coaching
- sign language interpreters
- adapted computer access

TYPES OF ACCOMMODATIONS AVAILABLE

Classroom accommodations

Copy of notes, audio record lectures, extra time on assignments, alternative presentation format, permission for medical entry and re-entry.

Testing accommodations

Additional time (time and a half or double time), reader, scribe, a separate, distraction-reduced testing environment, adaptive equipment and technology.

WHERE SHOULD
STUDENTS APPLY FOR
ACCESSIBILITY
SERVICES

Applications for accessibility services are available online (under the Disability tab for CF.edu)

or

Students can pick up an application at any of the three campuses:

Ocala, Citrus or Levy

WHEN SHOULD
STUDENTS APPLY FOR
ACCESSIBILITY
SERVICES

Once the student has been accepted into the College of Central Florida they can begin the registration process for Accessibility Services.

Application Process

Step 1: APPLY

Complete the application at the Accessibility office (bldg. 5, rm. 204) or complete online at CF Disability website.

Step 2: PROVIDE DOCUMENTATION


1. Provide a copy of the most recent IEP/504 Plan
2. Letter from licensed professional including, diagnosis, the impact of disability, treatments, and credentials of the licensed professional.
3. Documentation Verification Form (provided by staff/website)

Step 3: ATTEND INTAKE

Students meet with staff to discuss and review rules and regulations for the testing site and discuss appropriate accommodations for developing their FAN (Faculty Accommodation Notice).

FAN (FACULTY ACCOMMODATION NOTICE)

This document lists/explains the accommodations the student will be receiving in the classroom (both online and face-to-face) and for testing.

 Accessibility Services
Academic Accommodations for Students with Disabilities

XXXXXXXXXX
Submitted on: XXXXXXXX
Submitted by: Name/Title

*****PLEASE REVIEW THIS ACCOMMODATION NOTICE CAREFULLY.*****

Dear Professor and Student:
Testing may be handled through the Accessibility and Counseling Center (ACC) to better serve faculty, staff, and students. Students and Faculty will want to contact the ACC at disability@cf.edu, or stop by to schedule and drop off tests in building 5, room 204.

*****ACCOMMODATIONS NEED TO BE UPDATED FOR EACH TERM.*****

XXXXXXXXXX is eligible to receive accommodations for classes this semester:

Classroom Accommodations

- ❖ **NOTE:** No additional notifications from the student to the instructor to implement or maintain these accommodations during the semester are required. However, the student is encouraged to provide notifications to the instructors as a helpful and courteous reminder.
- ❖ The student is encouraged to engage in tutoring. Go to tutoring@cf.edu, or to Smart thinking online. You may also call [Ocala: 352-854-2322, ext. 1246](tel:352-854-2322), [Citrus: 352-249-1204](tel:352-249-1204), [Levy: 352-658-4077](tel:352-658-4077), to make an appointment. This information may also be found on Canvas.
 - XXX
 - XXX

Testing Accommodations

- ❖ **NOTE:** Any student wishing to take an exam in the Accessibility and Counseling Center must notify the Assessment and Accommodations Specialist at least **three** days in advance, and also advise the instructor. Failure to do so may result in loss of extended time on exams.
- ❖ Extended time also applies to online tests and quizzes, and should be added by the instructor. Faculty can consult the Distance Learning Help Desk at ext. 1317.
- ❖ Extended time does not apply to classroom pop quizzes, tests given in a laboratory environment, or oral tests for foreign language classes.
- ❖ Extended exam time is not permitted in the traditional classroom setting; these tests must be taken at the Accessibility and Counseling Center at the Ocala campus or the testing centers at the Citrus or Levy campuses, or when testing remotely.
 - XXX
 - XXX

Other Information

Contact the Accessibility and Counseling Center (ACC) for the continuation of the accommodations above. Students remain responsible for meeting the requirements of their classes and understand that accommodations are provided as long as they do not alter the essential content or academic integrity of the course. If you have any questions or would like assistance with this process, you may contact the Director of Accessibility and Counseling at 352-854-2322, ext. 1580 or Accessibility Services Staff Assistant at ext. 1209.

Once the FAN has been completed, ACC Staff will email the FAN to the student and their Instructors.



Accommodations for Testing

Students must schedule tests in advance
with ACC Testing Center

We have two private rooms and 1 large testing
room with computers.

We provide proctors, scribes, headphones, screen
enlargers, etc. for testing needs.

WHY IS ACCESSIBILITY
IMPORTANT

It ensures equal
access for students
with disabilities
and protects them
against
discrimination.

www.cf.edu

Disability@cf.edu

352-854-2322, ext. 1580

Learning and Academic Resources

COLLEGE *of* CENTRAL FLORIDA

Faithe Ruiz
Library Director



COLLEGE *of*
CENTRAL
FLORIDA

Learning and Academic Resources

Tutoring

- Writing help, tutoring in most subjects
- A&P Lab, Math Lab
- Online Tutoring – Brainfuse, access in Canvas

Contact

Citrus Campus: Muata Kamdibe - Citrus Skills Lab
ext. 6122 | kamdibem@cf.edu

Levy Campus: Kate Figueroa – Learning Resources
ext. 2151 | figuerok@cf.edu



Ocala Campus: Edwin Garcia - Learning Support
ext. 1514 | garciae@cf.edu



Learning and Academic Resources

E-Learning & Canvas Help

- Canvas help, online questions – DLHelp@cf.edu
- 24/7 Canvas Global Support, help tab in Canvas

 Commons	Ask the Community Get help from a Canvas expert
 Help	Chat with Canvas Support Live chat with Canvas Support!

Contact

Ocala Campus: Ashlyn Preece – E-Learning Support Specialist
ext. 1317 | DLHelp@cf.edu



Learning and Academic Resources

Library: library.cf.edu



- Online Support and Resources
 - Research help – email, chat, Zoom
 - Databases, e-journals, e-books, video tutorials
- On Campus
 - Borrowing – **your CF ID is your Library Card**
 - Research help, study space, computers, printing

Contact

Citrus Library | citruslb@cf.edu | Ocala Library | library@cf.edu

Student Life Activity

- Marjorie McGee
- Director of Student Life



First Year Seminar SLS1122

COLLEGE *of* CENTRAL FLORIDA

Julee McCammon

Associate Professor



Activity: Honest and Anonymous

Is CF meeting the needs of students?

What additional support could CF offer?

**First Year Seminar
SLS1122
Stats**

Average graduating GPA:

SLS: 3.43 vs

FYS Assignments

40% of grade

Consistent curriculum in all SLS1122

Scaffolding to help in other classes

Meeting with professors

Using tutoring services

Engaging with peers, faculty, staff

Academic Pathways



COURSES TO OBTAIN DEGREE



**TRANSFER OR WORKFORCE
READY**

Financial Literacy



High cost of higher education



Simulated living on a fake budget



Monthly budget based on starting salary



Research practicalities: car loans, taxes, credit, scholarship

New to First Year Seminar SLS1122

- ePortfolio
- Assignments that utilize AI practice

Student Leadership Opportunities and Words of Appreciation

COLLEGE *of* CENTRAL FLORIDA

Student Ambassadors



Closing Remarks

COLLEGE *of* CENTRAL FLORIDA

Dr. Raphel Robinson

Director of Admissions and Student Recruitment

