



# CONNECTION

A COLLEGE OF CENTRAL FLORIDA PUBLICATION

VOLUME 18 • NUMBER 1 • SUMMER 2017



*Welcome,  
Vintage Farm*

*CF Foundation  
Annual Report  
page 9*



CONNECTION

Summer 2017  
Volume 18, Number 1

**PUBLISHER**  
Lois Brauckmuller

**EDITORS**  
Staci Biondini  
Lois Brauckmuller

**WRITERS**  
Staci Biondini  
Victoria Billig  
Vianca Torres

**PHOTOGRAPHY**  
Berry Davis III  
Mac Dismuke  
Robin Dunn  
Marjorie McGee  
Ocala StarBanner  
David Reutter

**GRAPHIC DESIGN**  
Sarah Eshleman

IN THIS ISSUE

- 2 Jack Wilkinson Levy Campus
- 3 News
- 5 Health Sciences news
- 7 Meet our newest campus
- 9 CF Foundation annual report
- 11 Celebrating 60 years
- 13 Applauding students, faculty and staff
- 15 Alumni Association news
- 16 Appleton Museum of Art



**ON THE COVER:** CF Equine Studies student Clara Sanna, an international student from Italy, with Eloise, an American Warmblood, owned by CF professor Dr. Judy Downer, take in the view at the new Vintage Farm Campus.

College of Central Florida does not discriminate against any person on the basis of race, color, ethnicity, religion, gender, pregnancy, age, marital status, national origin, genetic information or disability status in its programs, activities and employment. For inquiries regarding nondiscrimination policies contact Equity Officer, Ocala Campus, Ewers Century Center, Room 201C, 3001 S.W. College Road, 352-854-2322, ext. 1437, or smitho@cf.edu.

My View



Happy Birthday, CF!

The College of Central Florida celebrates 60 years of meeting the higher education needs of our community in 2017. There is no better way to celebrate than opening our new Levy Campus. And I am excited to say that isn't the only way we are growing. We have much to celebrate!

We held two ribbon-cutting ceremonies with the Ocala/Marion County Chamber and Economic Partnership in 2016-2017, we gained a new campus with the donation of Vintage Farm (page 7) and plans are underway for a new Health Sciences Building (page 5).

CF is able to grow because the talent of our students, faculty and staff continues to shine and lends credibility to the great things the college can accomplish. It is fitting that 60 years is a diamond anniversary; I believe the College of Central Florida is the crown jewel of Citrus, Levy and Marion counties.

James D. Henningsen, Ed.D.  
CF President

Mission Statement

*College of Central Florida provides access to high quality, high value baccalaureate degrees, associate degrees, certificates and diplomas, and promotes economic, social and cultural development of our community.*



*Join us for an Open House*

CF Jack Wilkinson Levy Campus  
Friday, Aug. 11

**The College of Central Florida Jack Wilkinson Levy Campus will open for fall 2017 classes, which begin Monday, Aug. 21.** An open house celebration will be held for the community Friday, Aug. 11, 2-4 p.m.

The campus, 15390 N.W. Highway 19, Chiefland, will feature a comprehensive student center with enrollment services, counseling and advising, financial aid, testing, computer stations, a campus bookstore, student lounge and student life office, a health and wellness area, five fully equipped multi-purpose classrooms, a large multi-discipline science lab, three state-of-the-art computer labs for college credit and corporate education courses, as well as faculty offices and adjunct space.

To celebrate the historical event, the college is offering \$500 scholarships to students who want to be among the first to attend the new campus. One-hundred scholarships are available to eligible students who take six or more credits at the new campus in fall semester. The scholarships are available to new and returning students, as well as students currently enrolled at another college or university.

The \$30 college application fee is also being waived for students who plan to attend the new campus, which is the first permanent higher education facility in Levy County.

“CF is making history in Levy County and we want our students to make history, too,” said Dr. Rayanne Giddis, provost.



# News

## New Dental Clinic opens at Hampton Center

The college held a ribbon cutting with the Ocala/Marion County Chamber and Economic Partnership at the Hampton Center Dental Clinic May 25. The dental clinic was renovated with a \$416,032 grant from the Marion County Hospital District. Five chairs/dental stations were added to the clinic, increasing to 13 total. With the added seats, the clinic will be able to provide more than 6,000 adult dental treatments annually, an estimated increase of 215 percent. CF partners with the Department of Health in Marion County to provide dental care to underserved populations and to provide hands-on training to students in the CF Dental Assisting program. "It's a wonderful experience for our students," said Deanna Stentiford, associate dean of Health Sciences. "Not only do they get to assist the two clinic dentists with patients, but the very nature of the clinic establishes the importance of community service and giving back." The partnership has garnered national and state best practices awards for CF and Marion County. In 2014, the clinic received one of 22 Model Practice Awards from the National Association of County and City Health Officials; a Chancellor's Best Practice Award from the Association of Florida Colleges; and the Volunteer Florida Champion of Service Award from Gov. Rick Scott.



## Now offering guaranteed admission to USF through FUSE

CF has joined FUSE, a new University of South Florida program that guarantees USF admission to students who earn an associate degree at CF. "This partnership is a huge benefit to our students and community," said Dr. Jim Henningsen, CF president. "It gives students the opportunity to complete their first two years at CF, where they thrive in smaller classes with our award-winning faculty and programs and pay less in tuition. It is a another step forward in helping increase the education attainment level of our community by increasing access to bachelor's degree programs in Marion, Citrus and Levy counties." While students who graduate with an Associate in Arts or an articulated Associate in Science degree from a Florida College System institution are guaranteed admission to a state university in Florida, FUSE guarantees admission to USF. CF will begin enrolling students in FUSE in fall 2017. To learn more visit [USF.edu/fuse](http://USF.edu/fuse).

## Two Health Sciences programs rank 3rd and 5th in nation

The college's Physical Therapist Assistant and Emergency Medical Services programs are among the best in the nation according to [Accreditedschoolsonline.org](http://Accreditedschoolsonline.org). Ranked third in the nation among four-year colleges, CF's Physical Therapist Assistant program takes about two years to complete and currently boasts a 100 percent graduation rate and 100 percent employment rate. CF's Emergency Medical Services program, ranked fifth in the nation among four-year schools, takes 15 weeks to complete and leads to certification as an EMT. [Accreditedschoolsonline.org](http://Accreditedschoolsonline.org) ranks accredited colleges and universities throughout the nation on affordability, student services, availability of online programs and more. The tool allows students to connect with schools based on the factors that are most important to them.

## Hospice named Community Arts Partner

The college has awarded its 2017-2018 Community Arts Partner award to Hospice of Marion County. The Community Arts Partner program allows local arts organizations to hold performances and other events in the Charles R. Dassance Fine Arts Center or the Appleton Museum of Art for a free or reduced rate. Hospice will host a dramatic play that tells the stories of nine cancer patients. Each story, told from the perspective of the patient, offers insight into living life to the fullest down to one's last day. CF students, Hospice volunteers and patients, and Master the Possibilities volunteers will help bring this profound 90-minute performance to life.



## Best in the Nation

### CF No. 10

#### Best Online College

OnlineColleges.com ranked CF 10th out of 112 Florida colleges and universities.

Availability of online programs, affordability and student services were considered in the ranking.



### CF No. 17

#### Best Community College

CollegeChoice.net ranked CF No. 17 on its list of 50 Best Community Colleges for 2016-2017.

Retention and graduation rates, tuition, and percentage of minority students contributed to the ranking.



### CF No. 30

#### Best Adult Education

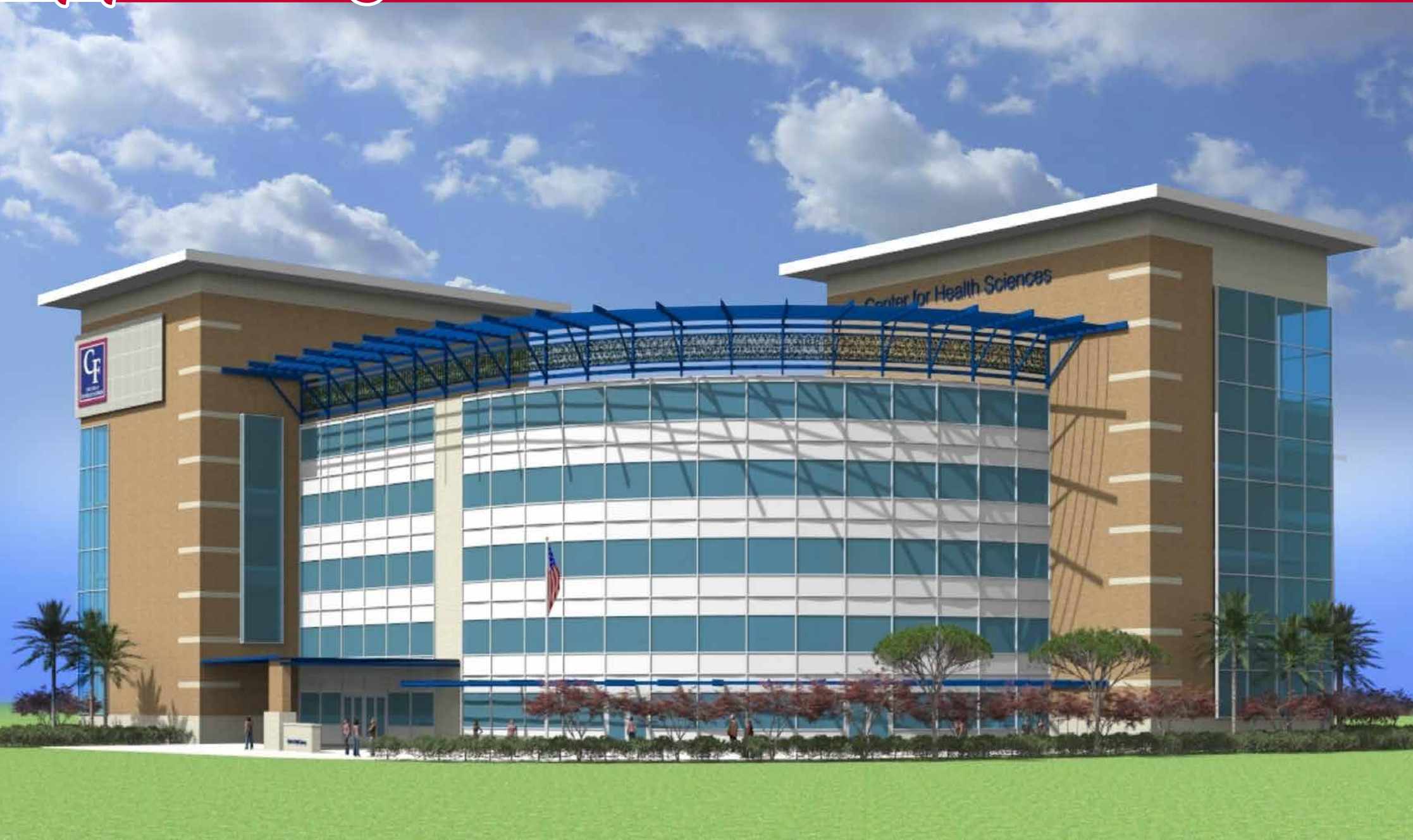
GreatValueColleges.net ranked CF No. 30 on its 2017-2018 list of 50 Best Colleges for Adult Education.

The ranking was developed from the U.S. News and World Report list of 100 colleges with the highest percentage of students over age 25.





# Health Sciences news



## \$6 million for new Health Sciences Center

**In March the college received a \$6 million commitment from the Marion County Hospital District to build a new state-of-the-art health sciences center.** The grant is the largest amount to be distributed from the \$212 million the district received from leasing Munroe Regional Medical Center.

The money will be used as leverage as the college asks the Florida Legislature for \$23.7 million in matching funds for the building, which has been the college's No. 1 priority since receiving funding for the new Levy Campus.

The college will receive \$3 million from the state in 2017-2018, and will ask for the rest over the next four or five years. The district's commitment is good for eight years and the district will release 20 percent in matching the amount each year that the college receives from the state.

The current Health Sciences building at the Ocala Campus is 30 years old. The college renovated the former cosmetology building to open a new Health Sciences Simulation Center in January, and some health sciences programs are offered at the Hampton Center.

A new building would allow the college to consolidate health sciences courses into a central location for students in nursing, emergency medical services, physical therapy, radiography and dental assisting.

The new facility would also allow the college to increase program capacity. There are currently 225 Associate Degree Nursing students; with the new building, that number could increase to 300. The Bachelor of Science in Nursing program could double from 75 students to 150, and the Dental Assisting program could grow from 14 students to 30.

## Health Sciences Simulation Center unveiled

**The Ocala/Marion County Chamber and Economic Partnership helped the college welcome donors, legislators and the community to a ribbon cutting for the new Health Sciences Simulation Center Jan. 19.**

Visitors toured the state-of-the-art education center and viewed the nine patient simulators that bleed, breathe and move. Some even witnessed a simulator give birth.

The simulators were made possible through \$425,000 in private donations from donors like Mary Kraus, a longtime supporter of the college and Appleton Museum of Art. Kraus donated in memory of her husband, the late Daniel M. Kraus, M.D.

Also at the ribbon cutting, Dr. Stephanie Cortes, dean of Health Sciences, announced plans for a fast-track Associate Degree



in Nursing that would cut time-to-degree completion from 24 months to 17 months.

"Since 1963, more than 9,700 students have earned a certificate or degree in Health Sciences from the College of Central Florida," said Dr. Mark Paugh, vice president of Academic Affairs. "The high-tech environment, accessibility of highly credentialed faculty, affordability, availability of scholarships, and focus on student success make CF the first choice for Health Sciences education in our community."

## Radiography program begins in August

**The college's new two-year Radiography program will open in August with 20 students.** The program will help hospitals, urgent care centers and other medical facilities fill vacancies and it will open the path for graduates to

enter other in-demand areas of medical imaging such as mammography, magnetic resonance imaging (MRI), computed tomography (CT), nuclear medicine and other imaging specialties.

CF previously partnered with Marion Technical College (formerly known as Community Technical and Adult Education or CTAE) to offer the program; however, the college's accrediting agency, the Southern Association of Colleges and Schools Commission on Colleges, said CF could no longer offer the program offsite.

The college hired Dr. Mitchell Housenick to manage the new program. Housenick has launched three other radiography programs around the country, including the program at the Cambridge Institute of Allied Health and Technology in Atlanta. Housenick assembled the curriculum for CF's program, which will meet the Joint Review Committee on Education in Radiologic Technology's highest accreditation level, Gold Seal.





# Meet our newest campus

**farm** | fahrn | *noun*

an area of land and its building used for growing crops and rearing animals, typically under the control of one owner or manager.

**Vintage Farm** | vin-tij fahrn | *noun*

103 acres of land and its buildings used for training and educating College of Central Florida students; valued at more than \$2.9 million, the largest gift in CF Foundation history.

## Meet our newest campus: Vintage Farm

**Five years ago, passersby on what longtime Ocalans call Shady Hill Road (County Road 475) began to see major changes happening to the old farmhouse north of Grace Christian School.**

A beautiful split-rail fence went up; the farmhouse originally built in 1942 was renovated; raised planters were installed; fruit trees, sunflowers and berry bushes were planted; and several new buildings were raised, the largest a show-stopper barn with a copper-colored metal roof.

Many thought the property was being transformed into a special events venue; however, the owner wasn't transforming it, he was restoring it. His goal? To return the property to its roots — from the late 1970s to 2003, the property was used to raise cattle, chickens and hay — and create a hands-on educational agricultural program that reflects the land's heritage.

The deed to the fully restored Vintage Farm was transferred to the College of Central Florida Foundation on Dec. 28, 2016. The donor wishes to remain anonymous, but a large portion of his goal has been reached. The college is now charged with taking the goal to completion.

"It's been amazing to watch this property transform," said Fred Roberts Jr., CF Foundation board chair. "Being entrusted with its care is an honor and speaks volumes to the integrity of the CF Foundation. Much faith has been placed in the college to ensure that the educational vision for the farm is carried out, and there is no better steward."

Approximately 150 students in the college's Associate in Science programs in Equine Studies and Agribusiness and the Bachelor of Applied Science in Business and

Organizational Management Agribusiness specialization will be among the first to receive hands-on instruction at Vintage Farm.

Valued at more than \$2.9 million, the Vintage Farm gift is the biggest in the foundation's 58-year history. Founded in 1959, the CF Foundation has over 400 scholarships, 363 of them endowed, for CF students. In 2016, 14 new scholarships and one endowed chair were added. The foundation also supports the college by funding capital resources and faculty chairs.

"This year the college celebrates 60 years of providing education and workforce training in our community, and I cannot think of a better way to celebrate our past accomplishments than to look to the future," said Dr. Jim Henningsen, CF president. "The CF Foundation helps make that future brighter for our students and the communities we serve."



## CF Foundation Milestones

- 2016** — Received Vintage Farm, valued at \$2.9 million
- 2012** — Promise for the Future campaign ends with more than \$7 million capital raised on Citrus, Levy and Ocala campuses
- 2009** — \$2.5 million received from the Jack Wilkinson estate to construct the CF Jack Wilkinson Levy Campus
- 2001** — \$2 million received from Ron and Phyllis Ewers to construct Ewers Century Center
- 1996** — Over \$500,000 legacy gift received from Gladys Webber to construct Webber Center and Gallery
- 1989** — Assets reach \$1 million
- 1960** — \$150,000 received from Mont and Jesse Shackman for scholarships
- 1959** — Foundation Established



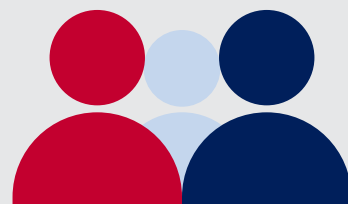
## Fiscal Year 2016 by the Numbers



**94%**  
of full-time faculty  
and staff gave back.



**\$4.6 million**  
raised. Up 296%  
from 2015.



**1,076**  
individuals gave.

**\$991,507**  
in scholarships  
awarded to students.

**349** individuals, corporations or foundations  
made lifetime gifts to the CF Foundation totaling  
**\$10,000** or more.



### Every gift creates an opportunity.

Dear Friends of the College and CF Alumni:

I am always awestruck by the generosity and kindness of those in our great communities who work with us to better the lives of students or strengthen key programs needed in our service area. Truly, I am fortunate for the trust given the CF Foundation.

I am not just speaking of the gifts given us. I am referring to the trust of our donors' vision of what a better world looks like. The act of giving is very much an expression of hope. Scholarships transform lives and give students the opportunity to pursue their dreams. This year 14 new scholarships were established adding to our over 400 scholarships. Gifts to the foundation for needs such as CF's Health Sciences Simulation Center help purchase the much needed equipment to meet dire needs in our communities. Some gifts transform programs to their core allowing for dramatic expansion as the gift of Vintage Farm has done to our Agribusiness and Equine Studies programs.

A quick review of our financials will show the CF Foundation had one of its best years in 2016. It is because of you – our friends and alumni.

So, as the college celebrates 60 years serving Citrus, Levy and Marion counties, the foundation salutes all of our donors through the years and last year who have shared and entrusted their hopes for a better world with us through educational advancement.

If we can be of assistance, please get in touch. The foundation team is here to help you achieve your goals while helping our students and the citizens and businesses of our communities reach ever higher.

Sincerely,

Christopher R. Knife  
Executive Director



For more information about making a gift or including the  
CF Foundation in your will, contact the Foundation office at  
352-873-5808 or [foundation@cf.edu](mailto:foundation@cf.edu).

## ASSETS

### Current Assets

Cash and Investments	\$3,190,496
Other Current Assets	101,363
<b>Total Current Assets</b>	<b>3,291,859</b>

### Non-Current Assets

The Appleton Museum	16,985,565
Other Property & Equipment	371,802
CF Vintage Farm Campus	2,950,000
College Square Residence	3,537,273
Enterprise Center	3,023,971
Less Accumulated Depreciation	(2,814,420)
Investments - Endowed	67,432,157
Investments - Restricted	2,121,016
Other Non-Current Assets	1,361,054

**Total Non-Current Assets** **94,968,418**

**TOTAL ASSETS** **\$98,260,277**

## LIABILITIES

### Current Liabilities

Bonds Payable (Current Portion)	\$145,002
Current Liabilities	308,225
<b>Total Current Liabilities</b>	<b>453,227</b>

### Long-Term Liabilities

Bonds Payable (Long-term Portion)	975,000
Other Long-term Liabilities	896,944

**Total Long-Term Liabilities** **1,871,944**

**TOTAL LIABILITIES** **2,325,171**

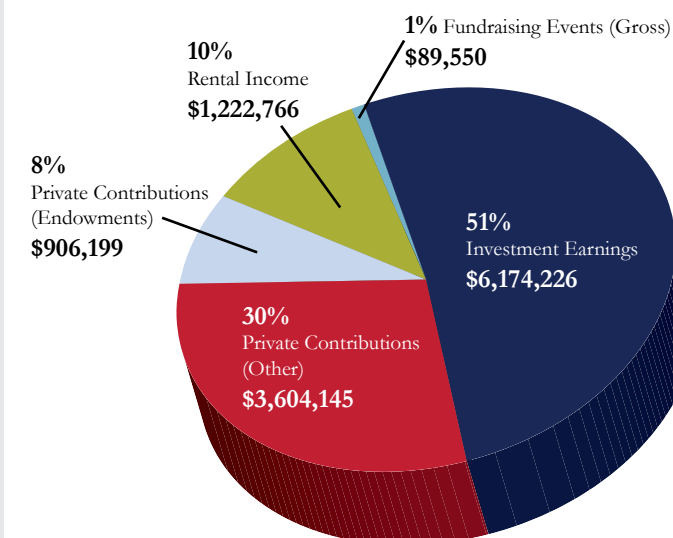
## NET ASSETS

Operating Fund - Unrestricted	3,114,555
Operating Fund - Restricted	3,384,638
Non-expendable Endowed	67,154,860
General Plant	19,957,116
Student Housing	1,265,982
Enterprise Center	1,057,955

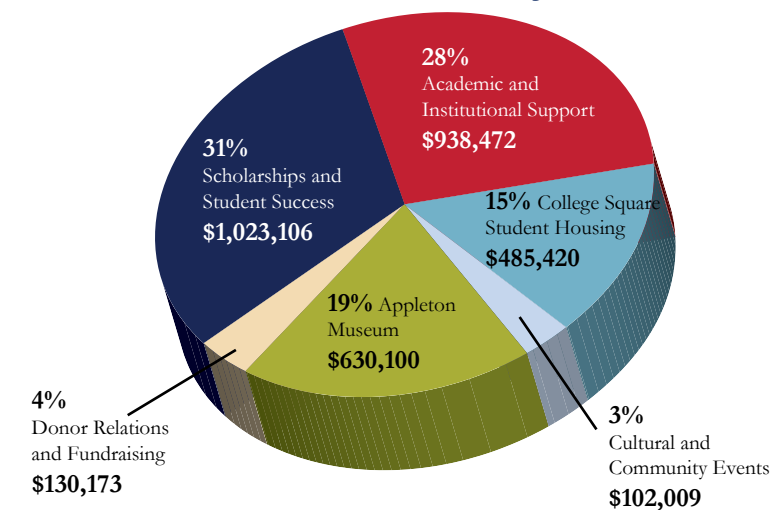
**TOTAL NET ASSETS** **95,935,106**

**TOTAL LIABILITIES  
AND NET ASSETS** **\$98,260,277**

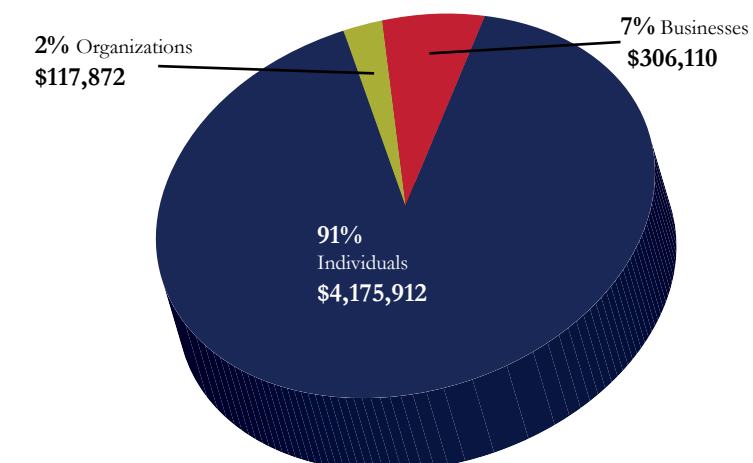
## 2016 Sources of Revenue



## 2016 Support to College and Community



## 2016 Sources of Contributions





# Celebrating 60 years

# Looking Back: 1957-2017



1a

**1a:** In June 1957, the Marion County School Board committed financial resources for a junior college, and land on State Road 200 was purchased in 1958. Construction on the first building — which included eight classrooms, faculty and administrative offices, a clinic, and conference rooms — was completed in 1960.



1b

**1b:** In January 2009, the building was renamed **Founders Hall** following a major expansion and renovation. Today, the Office of the President, Financial Affairs, Academic Affairs, Human Resources, Grants and Institutional Effectiveness are located in the building.



2b

**2a:** The college completed construction of the **C. Farris Bryant Student Union** in 1967. Bryant, a Marion County native who graduated from Ocala High School, was elected the 34th governor of Florida in 1960.

**2b:** The student union was renovated and expanded in 2005-2006. The building houses Student Affairs, Academic Advising, Admissions, Financial Aid, Disability Services, Testing and the Patriot Cafe.



2a



3b

**3a:** Hampton Junior College opened in fall 1958, becoming one of six black junior colleges established between 1949 and 1958 in Florida. Although it existed for only eight years, the college made quite an impact on the community. Today, Howard Middle School is located at the HJC site.

**3b:** In 2004, the college opened the **Hampton Center** on the site of the former Florida State Fire College. The center, named in tribute, was opened to house the Marion County Health Department's Dental Clinic and the college's Dental Assisting programs, along with several college outreach programs. The Dental Clinic was expanded in 2016 with a grant from the Marion County Hospital District.



3a



4a

**4a:** For years, the vacant land at the entrance to the college on State Road 200 was used for car tent sales and the circus when it came to town.

**4b:** In 2004, the **Ewers Century Center**, a three-story 60,000 square-foot classroom and meeting facility was built, giving the college a new "front door." Myriad community events, including the CF Foundation's signature Taste of Ocala gala, are now held in the flagship building named for CF District Board of Trustees' member Ron Ewers and his wife, Phyllis.



4b



# Applauding students, faculty and staff

## Baseball player drafted to major leagues

**Congratulations, Nate Pearson!** Baseball player Nate Pearson was drafted 28<sup>th</sup> overall (first round) by the Toronto Blue Jays June 12 in the Major League Baseball Draft.

Pearson was named the Rawlings JUCO Pitcher of the Year and is one of 25 semifinalists for the prestigious USA Baseball Golden Spikes Award.

The sophomore right-hander from Tampa was a force on the mound in 2017. The Louisiana State University signee dominated opponents, allowing one earned run or less in nine of his 13 starts. His 1.56 ERA ranked top three in the state this season and second all-time in Patriot history.

Pearson held opponents to a .194 batting average while striking out 118 in 81 innings, good for top 3 in the state and National Junior College Athletic Association. The Mid-Florida Conference All-Conference and All-State honoree also had nine or more strikeouts in nine of his 13 starts as his fastball sat from 94-98 MPH.



## Association of Florida Colleges honors CF

**The college was honored with several awards at the Association of Florida Colleges' annual conference.** The CF AFC Chapter won Chapter of the Year—Gold and CF professor Jana Bernhardt ranked in the top three for Faculty of the Year. CF Marketing and Public Relations earned 15 Awards of Excellence from the Communications and Marketing Commission: first place for Outdoor Advertising, first place for Print Advertising, first place for “Best Bang for the Buck,” first place for Direct Mail Piece, first and second place for Best Photography in a Published Piece, first place for Redesign of the CF Viewbook, first place for Social Media, second place for Annual Report, second place for Article in a College-Produced Publication, second place for Magazine, second place for Viewbook/Recruitment Piece, third place for Brochure, third place for Single Sheet Flier, third place for Specialty Advertising/Promotion Item. The Appleton Museum of Art, College of Central Florida, earned one Award of Excellence: third place for Direct Mail Piece for the 2016 Artful Dining series. The CF Foundation also earned one second place for Annual Report – Foundation. Several CF faculty and staff accepted 2017 state leadership positions: Ron Kielty, chair-elect for the Technology Commission; Marjorie McGee, vice president of Commissions; Dr. Cynthia Moody, vice chair for the Faculty Commission; Dr. Jillian Ramsammy, chair for Institutional Effectiveness, Planning, and Professional Development Commission; Karen Tolson, chair for Workforce, Adult and Continuing Education Commission.



## Students shine at music symposium

**Congratulations, Chase DeCarlo and Marcus Chandler.** The college was well represented at the Florida College System Activities Association Winter Music Symposium. Chase DeCarlo won first place in the brass instrument category and received a \$2,000 scholarship to further his education. Percussionist Marcus Chandler received an honorable mention.



## Mr. & Ms. CF

**Congratulations, Mr. & Ms. CF 2017, Morey Lewis and Shelby Willard.** Lewis, representing the African-American Student Union, and Willard, representing the Citrus Campus Student Ambassadors, each received a \$1,000 scholarship at the February event sponsored by the CF Foundation.



## Florida College System honors McAteer

**Congratulations, Ken McAteer.** McAteer, center, the 2016-2017 West Port High School principal, received the Florida College System Student Government Association Bob Graham Distinguished Service Award in April. The award is given annually to one student, one college employee, one community supporter and one SGA advisor who has provided distinguished service to his or her community or state college. McAteer won in the community supporter category.

## Four named to All-Florida Academic Team

**Congratulations Danielle Bryan, Madeline Ginn, Katlyn McNeal and Jennifer Rivera.** The students were among 127 in the state named to the 2017 All-Florida Academic Team for their outstanding achievements, leadership and service to the community.



From left, Dr. Henningsen, Bryan, Rivera, Ginn, District Board of Trustees Chair Bobby Durrance, Dr. Mark Paugh and Dean Allan Danuff.



# Alumni Association news

1987-2017  
**30** YEARS  
College of Central Florida  
**APPLETON**  
MUSEUM of **Art**



Alumni Board of Directors President Kelly Besser, left, presented the award to Mike Joyner at fall 2016 commencement with District Board of Trustees member Sandra Balfour and President Henningsen.

District Board of Trustees member Bill Edgar joined Henningsen and Besser to present the award to Judge Carlos Mendoza at spring 2017 commencement.

## 2017 Distinguished Alumni award winners

### Congratulations, Mike Joyner and Judge Carlos Mendoza.

Florida Assistant Commissioner of Agriculture and Consumer Services Mike Joyner graduated from Central Florida Community College in 1984.

After graduating from the University of Florida with a bachelor's degree in Agriculture, Food and Resource Economics, Joyner began his career with the Florida Farm Bureau in Gainesville. He went on to work for the Florida Forestry Association, Florida Department of Environmental Protection and in the private sector. The focus of his 25-year career has been supporting the management of Florida's agriculture, food, forestry and natural resources. In 2012, Joyner's outstanding leadership in Florida agriculture and natural resources was recognized with the Burl Long Leadership Award.

In addition to his career, Joyner has served Floridians by sitting on the boards of the Northwest Florida Water Management District, Center for Public Interest, Council for Sustainable Florida and Florida Natural Resources Leadership Institute.

Also a graduate of UF's Wedgeworth Leadership Institute for Agriculture and Natural Resources, he is actively involved in his church and lives in Tallahassee with his wife, Alicia, and their two daughters.

Judge Carlos Eduardo Mendoza graduated from Central Florida Community College in 1991. Today he serves as judge for the United States District Court for the Middle District of Florida.

Mendoza was born in Hialeah, Florida, and spent his early years in Marion County, graduating from Vanguard High School. He has said that the first 25 years of life are vital to shaping a person's destiny.

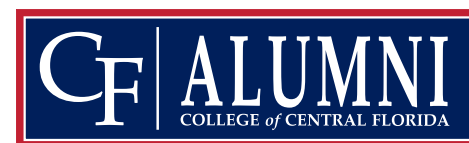
Mendoza enlisted in the U.S. Marine Corps after graduation from high school and participated in combat operations during Operation Desert Shield and Operation Desert Storm. After graduating with an Associate in Arts from CFCC, he received a Bachelor of Arts, magna cum laude, in 1993 from West Virginia University. He received a Juris Doctor in 1997 from West Virginia University College of Law.

Mendoza began his legal career as a Judge Advocate in the Judge Advocate General's

Corps of the U.S. Navy from 1997 to 2005. From 2005 to 2008, he was an Assistant State Attorney in the Seventh Judicial Circuit of Florida. From 2008 to 2011, he served as an Assistant City Attorney for St. Augustine, and from 2011 to 2014, he served as a Circuit Court Judge in the Seventh Judicial Circuit.

He has received numerous civilian and military honors including the Department of Justice Seal in 2005 and Navy/Marine Corps Commendation Medal in 2001, 2003 and 2005.

Mendoza resides in Orlando.



**CF.edu/Alumni**



Enjoy the special exhibitions and permanent collection, make art in the ARTSpace, or take a stroll in the Sculpture Walk & Garden – all for FREE!



CF staff, faculty and students are considered members of the Appleton and always receive free admission, but we encourage you to bring your nonmember friends and family for an art-filled day at the museum. For more information, visit [AppletonMuseum.org](http://AppletonMuseum.org) or contact Visitor Services at 352-291-4455.

## Summer Art Camp

The Appleton will host a summer of fun and creativity where children will learn the fundamentals of making art across a variety of unique themes. Morning and afternoon camps will be offered for ages 4 and up. Full art camp descriptions are available at [AppletonMuseum.org](http://AppletonMuseum.org).

### July 10-14

It's Good to be King or Queen, Ages 7-12, 9 a.m.-noon

Meet the Masters, Ages 4-6, 2-4 p.m.

### July 17-21

Down on the Farm, Ages 7-12, 9 a.m.-noon  
LEGO Block Party, Ages 7-12, 1-4 p.m.

### July 24-28

Up, Up in the Air, Ages 7-12, 9 a.m.-noon  
Art from Nature, Ages 7-12, 9 a.m.-noon  
Painting and Collage, Ages 11 and up, 1-4 p.m.

Classes fill quickly so register early at [AppletonMuseum.org](http://AppletonMuseum.org) or in person at the museum's Visitor Services desk in the lobby. Camp fees are discounted for museum members. College of Central Florida faculty, staff and students will receive the members price. Applications for need-based scholarships are available; contact Marie Fielding at 352-291-4455, ext. 1558.





## 'Bandits & Heroes, Poets & Saints: Popular Art of the Northeast of Brazil'

June 17-Aug. 13, 2017



"Bandits & Heroes, Poets & Saints," which features engaging photographs and works of popular art, including sculptures, paintings, prints, religious objects, toys, and booklets of poetry, explores how the ancient cultures of Africa blended with indigenous and colonial Portuguese traditions to form the vibrant and complex cultural mosaic of modern Brazil. The exhibition also illustrates the complex and vibrant culture of northeast Brazil and introduces the festivals, heroes and spiritual traditions that are important to the Nordestinos, common people of Brazil's

northeast. Throughout, "Bandits & Heroes" explores the resilience and vitality of modern-day descendants of Africa.

Did you know that 10 times more Africans were brought in bondage into Brazil than into the United States? Did you know that Northeast Brazil has the largest population of those of African descent outside Africa? Do you know how deeply the African heritage has influenced the culture of present-day Brazil? The exhibition is organized in three parts: The Land & its People, Expressions of Faith and Poetry, Celebration & Song. Throughout the exhibition space, the design makes use of colorful immersive environments. Hands-on, interactive music and video components will combine with large-scale photographs and original artifacts to show the complex history, religious devotion and artistic expression that come together in the popular art of Northeast Brazil.

### Special Events

**"Brazilian Extravaganza": Sunday, July 16, 2 p.m.**

Dr. Hingrid Kujawinski, former CF instructor of vocal music, and Dr. Sarah Satterfield, CF professor of music history and flute, will give a presentation on the history of Brazilian music and a recital featuring classical and popular instrumental and choral pieces.

**Capoeira Demonstration: Sunday, July 30, 2 p.m.**

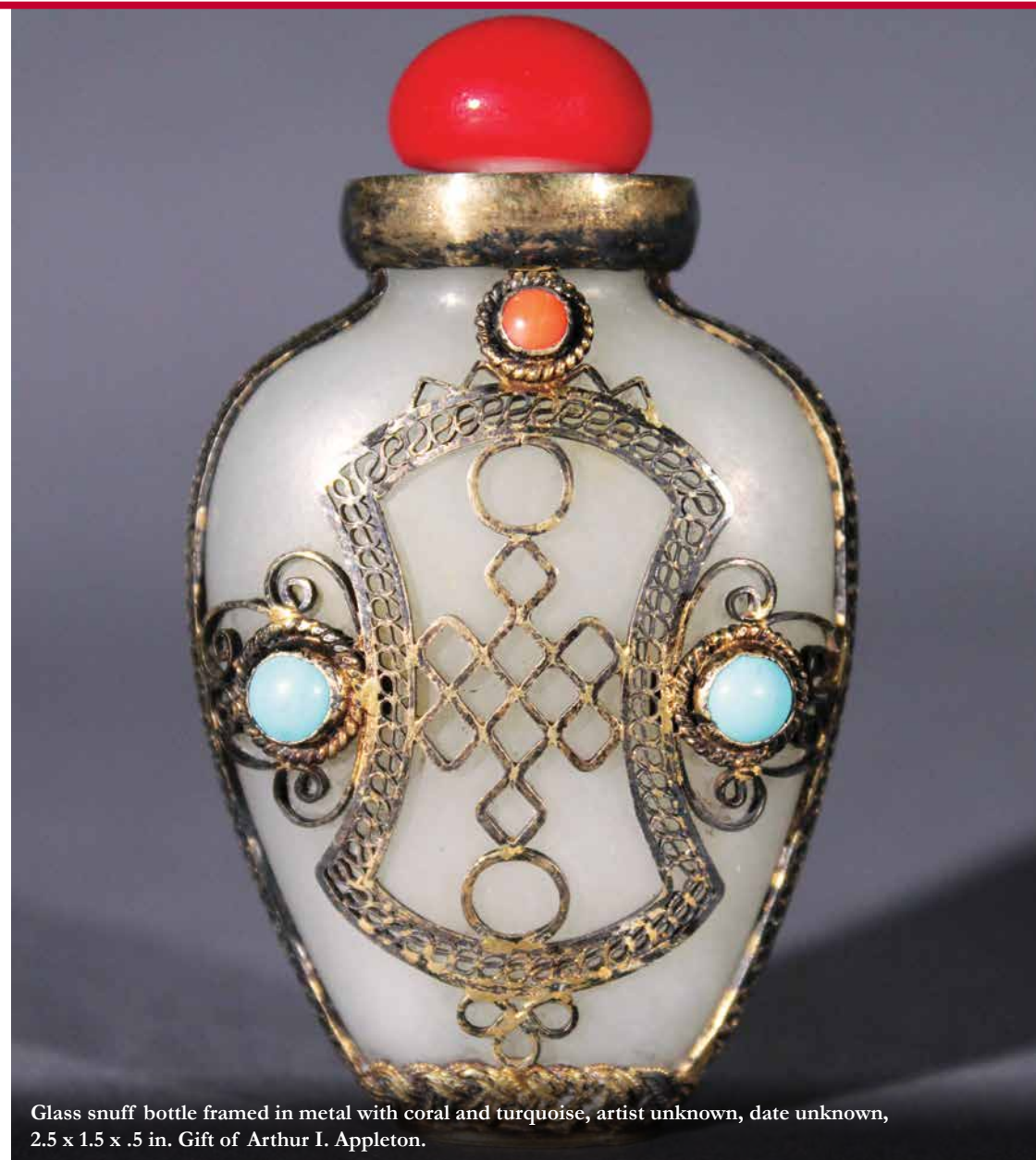
Professor Mico, Allied Capoeira League Gainesville, will give a lecture and demonstration on Capoeira, a martial art that combines elements of fight, acrobatics, music, dance and rituals.

**"Forged from the Fire: Slavery's Lasting Impact on Brazilian Culture": Thursday, Aug. 3, 2 p.m.**  
Richard Kirk, CF humanities professor, will give a talk examining the impact of the slave trade in Brazil, and how the blending of African, Portuguese and native Brazilian cultures eventually produced a distinct artistic heritage for the region.

There is no fee to attend these events.

"Bandits & Heroes, Poets & Saints: Popular Art of the Northeast of Brazil" was curated by Marion E. Jackson, Ph.D. and Barbara Cervenka, O.P., Curators, Con/Vida—Popular Arts of the Americas, and organized by Con/Vida—Popular Arts of the Americas and the Charles H. Wright Museum of African American History, Detroit, MI, in partnership with NEH on the Road/Mid-America Arts Alliance, Kansas City, MO.

At left, "Pelourinho" (detail) by Gilvan Lima (Gilvan de Cruz Lima), 1997, acrylic on canvas.



Glass snuff bottle framed in metal with coral and turquoise, artist unknown, date unknown, 2.5 x 1.5 x .5 in. Gift of Arthur I. Appleton.

## 'Coveted Delights: Qing Dynasty Snuff Bottles from the Permanent Collection'

June 17-Aug. 27, 2017

Asian and Western collectors have been fascinated with snuff bottles since they were first produced in China in the early 18th century. Deemed as precious containers for ground tobacco imported to China, snuff bottles were initially made for the emperor and the court. They were eventually produced in greater quantities for the public, who enjoyed the functionality of the bottles as well as their display as symbols of status. These striking miniatures not only illustrate the technical artistry of Qing dynasty craftsmen, but also provide a window on life and culture in late imperial China.

"Coveted Delights" features approximately 35 snuff bottles, organized by Robin Dunn, curatorial department intern. Dunn worked for the past six months to catalog and photograph the 226 snuff bottles in the permanent collection.







COLLEGE of  
CENTRAL  
FLORIDA

3001 S.W. College Rd.  
Ocala, FL 34474-4415

NONPROFIT  
U.S. POSTAGE  
PAID  
PERMIT NO.12  
OCALA, FL

# *In Person with Tyrus Clutter*

*Do what you love, and you'll never have to work a day in your life.*

Many seek the wisdom in this adage, but few find it. Tyrus Clutter is among the lucky ones.

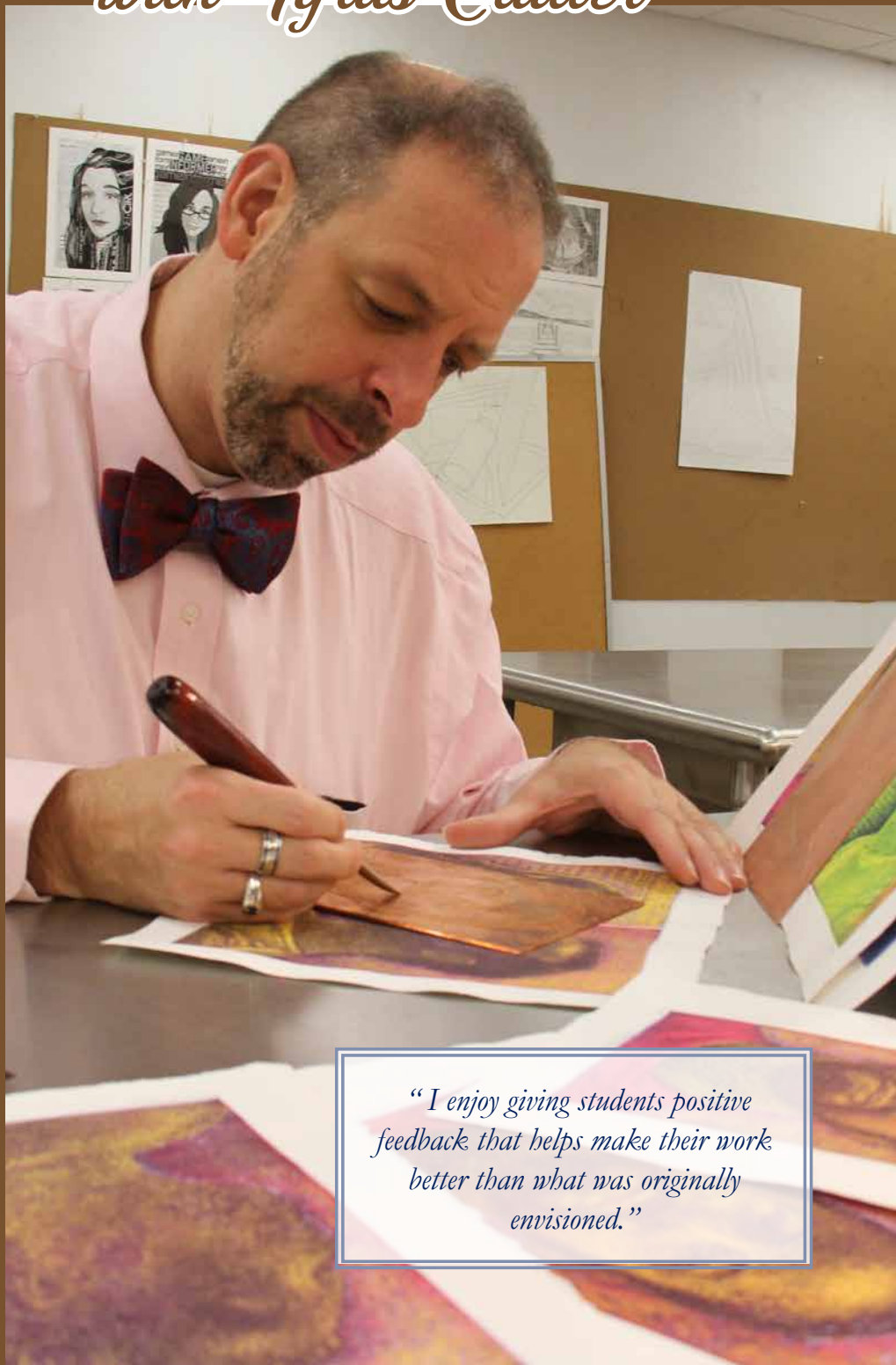
Clutter, who holds a bachelor's degree in Art from Spring Arbor University and a Master of Fine Arts in Painting from Bowling Green State University, is an accomplished artist with works in several hundred private collections as well as in the Print Collection of the New York Public Library, and the National September 11 Memorial Museum at the World Trade Center.

He enjoys teaching, but says it is a career that he fell into. He was pursuing art full time when he was presented with an opportunity to teach at CF.

"My role here is a win-win for me, and I believe it is also win-win for students," he said. "I enjoy giving students positive feedback that helps make their work better than what was originally envisioned. I am able to be involved in projects around campus and around Ocala, while still keeping up my personal studio practice and creating some of the most cohesive work of my career."

The community can see Clutter's art on display at the Appleton Museum of Art through Aug. 6.

"Con-Text: The Word Based Images of Tyrus Clutter" features prints created by hand or on a press from blocks and plates designed, carved and etched by Clutter. Marked by exuberant color combinations and embossed textural variations, the prints explore the ways we interpret both words and images. Some images are literally drawn with words. All the works explore interactivity, leading viewers to personally complete them by engaging the juxtapositions of texts and imagery.



*"I enjoy giving students positive feedback that helps make their work better than what was originally envisioned."*