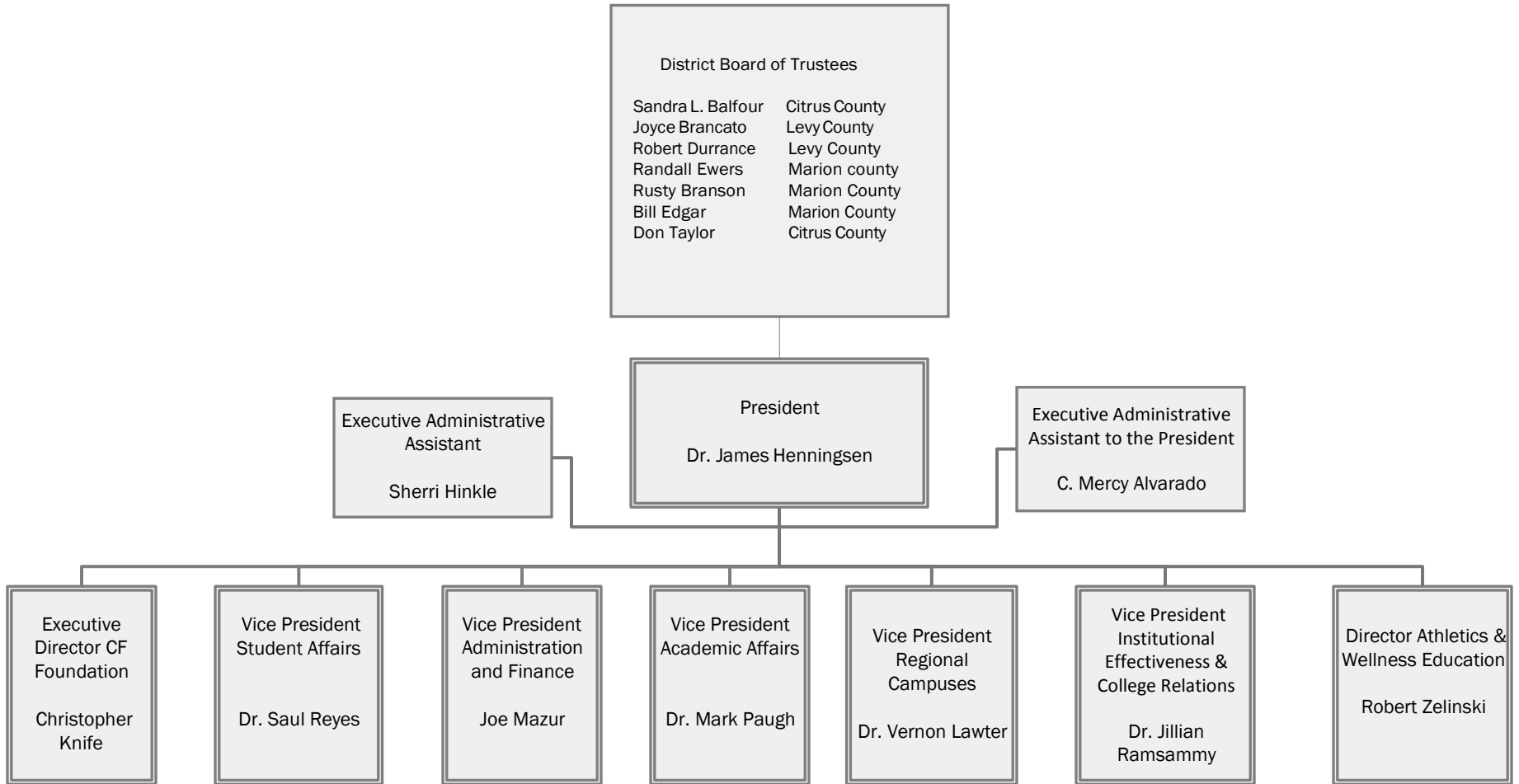


# Organizational Structure

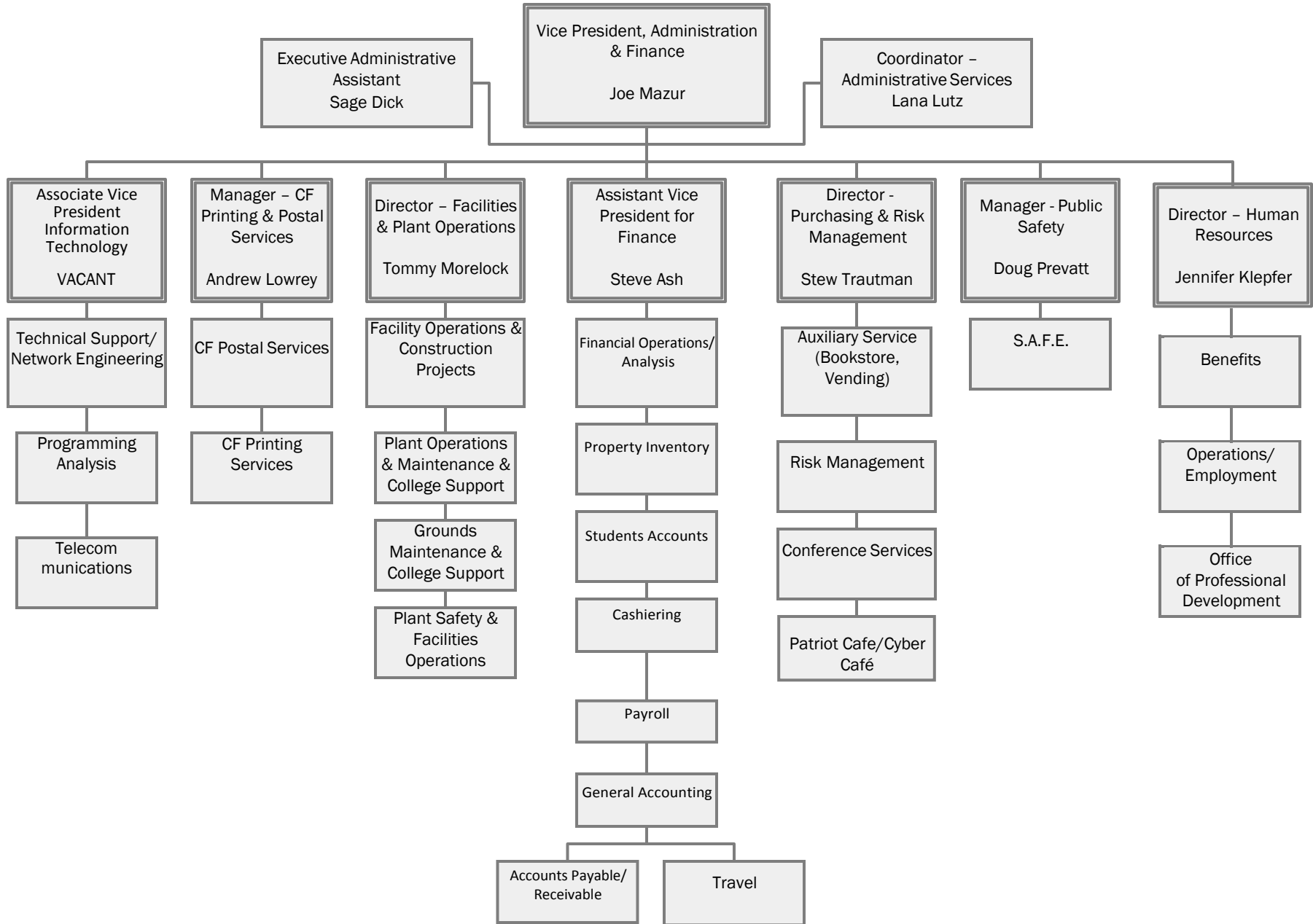
College of Central Florida



College of Central Florida does not discriminate against any person on the basis of race, color, ethnicity, religion, gender, age, marital status, national origin, genetic information or disability status in its programs, activities and employment. For inquiries regarding nondiscrimination policies contact Equity Officer, Ocala Campus, Ewers Century Center, Room 201C, 3001 S.W. College Road, 352-854-2322, ext. 1437, or smithc@cf.edu.

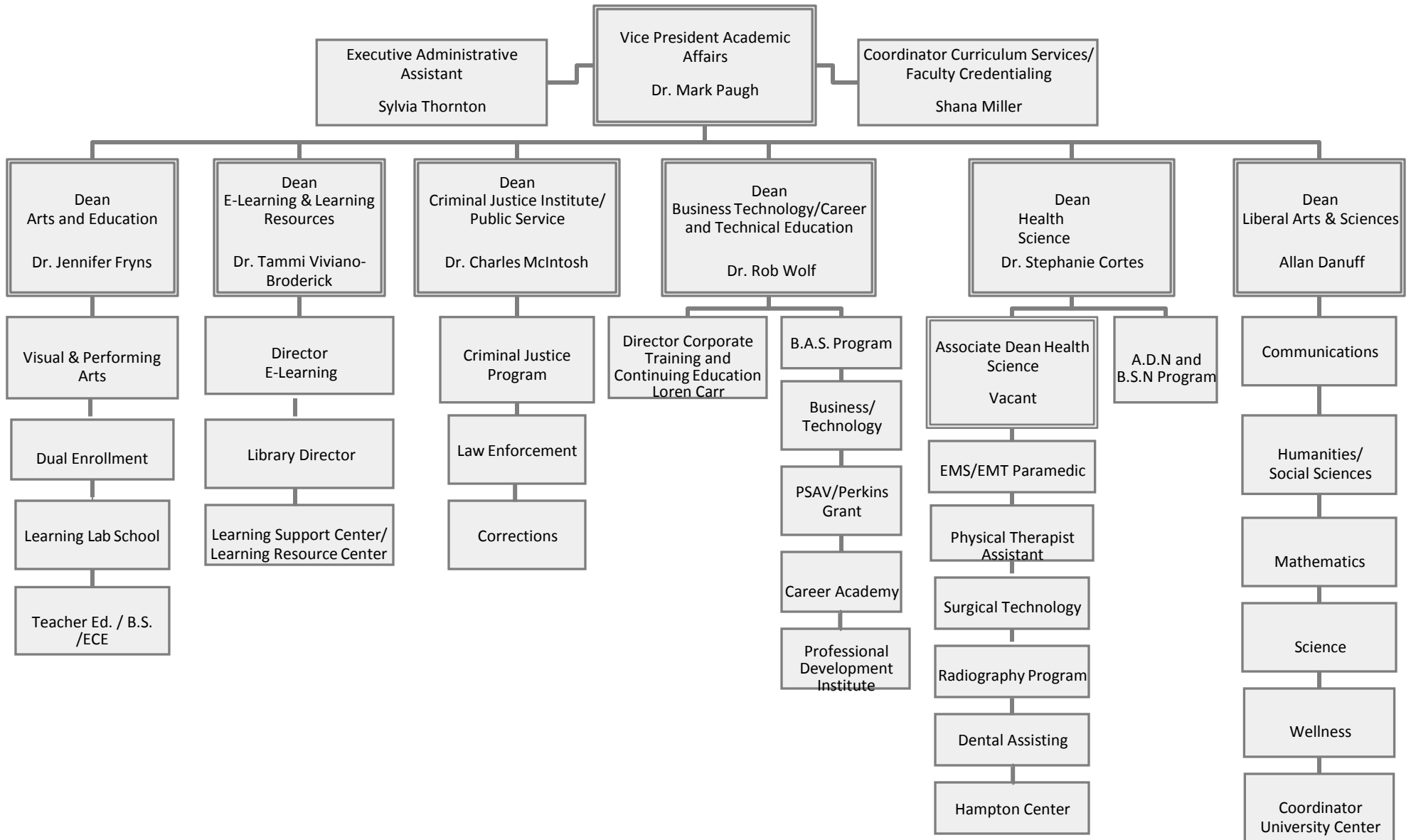
# Organizational Structure

College of Central Florida



# Organizational Structure

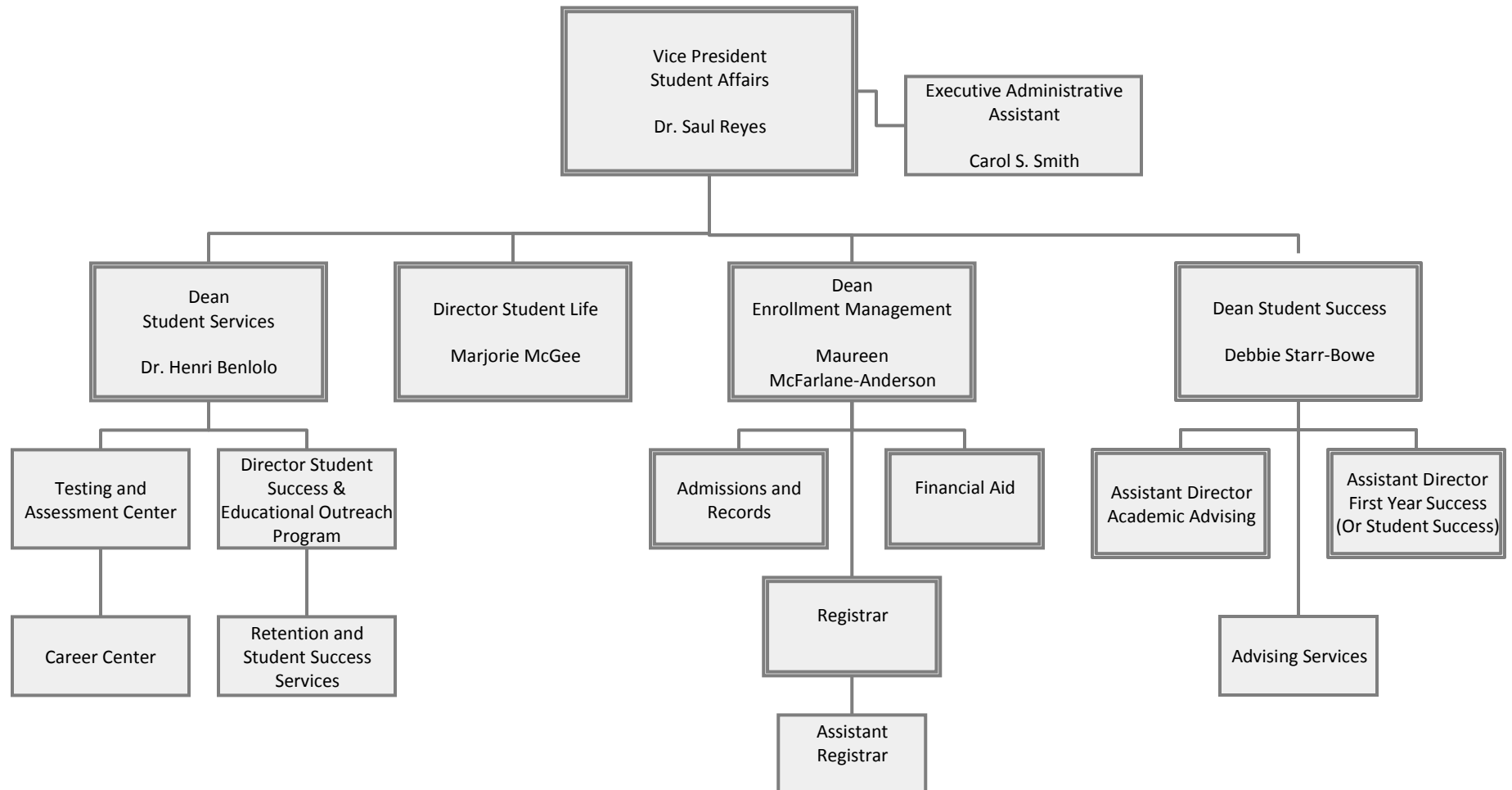
College of Central Florida



College of Central Florida does not discriminate against any person on the basis of race, color, ethnicity, religion, gender, age, marital status, national origin, genetic information or disability status in its programs, activities and employment. For inquiries regarding nondiscrimination policies contact Equity Officer, Ocala Campus, Ewers Century Center, Room 201C, 3001 S.W. College Road, 352-854-2322, ext. 1437, or smithc@cf.edu.

# Organizational Structure

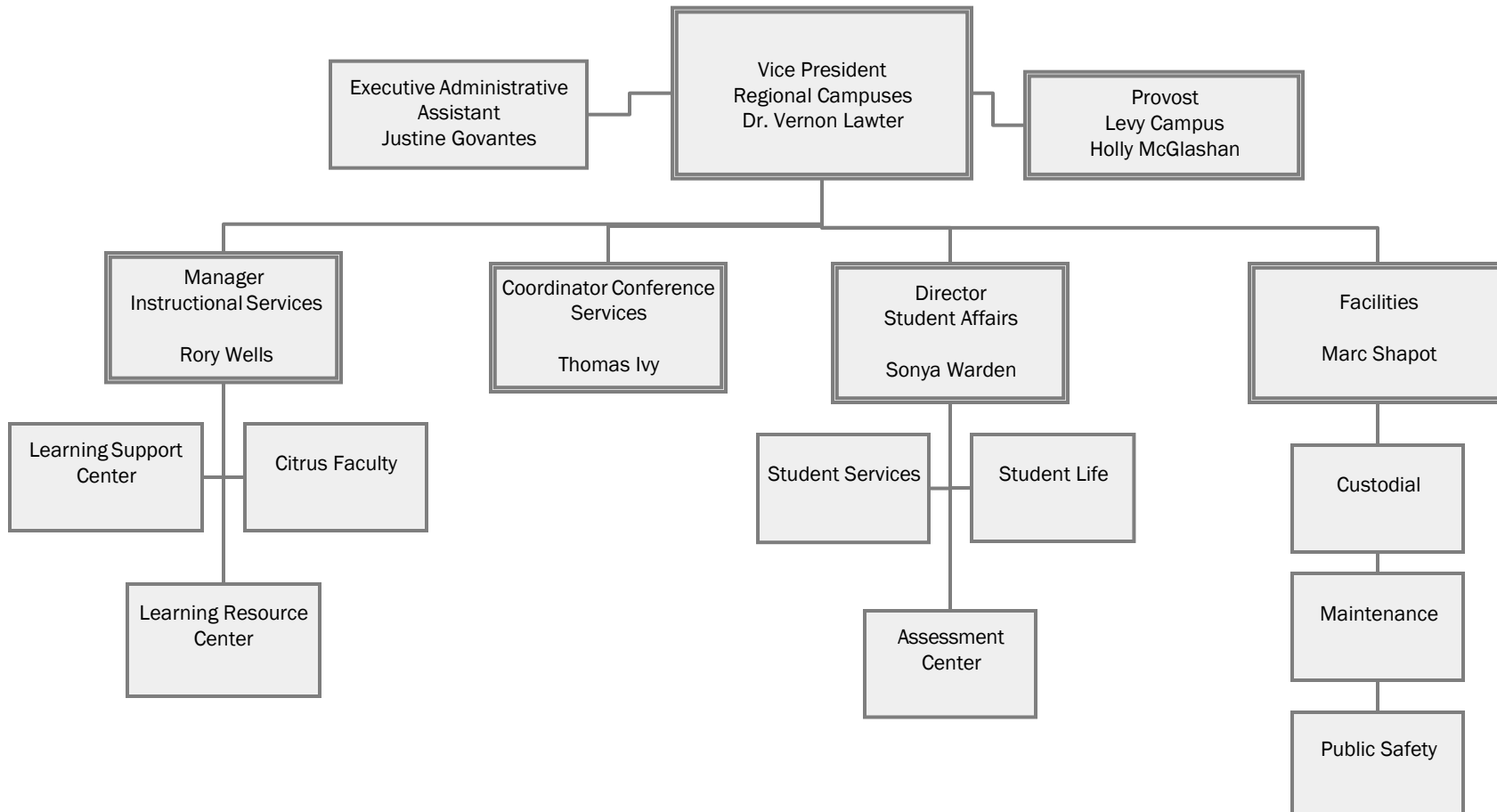
College of Central Florida



College of Central Florida does not discriminate against any person on the basis of race, color, ethnicity, religion, gender, age, marital status, national origin, genetic information or disability status in its programs, activities and employment. For inquiries regarding nondiscrimination policies contact Equity Officer, Ocala Campus, Ewers Century Center, Room 201C, 3001 S.W. College Road, 352-854-2322, ext. 1437, or smithc@cf.edu.

# Organizational Structure

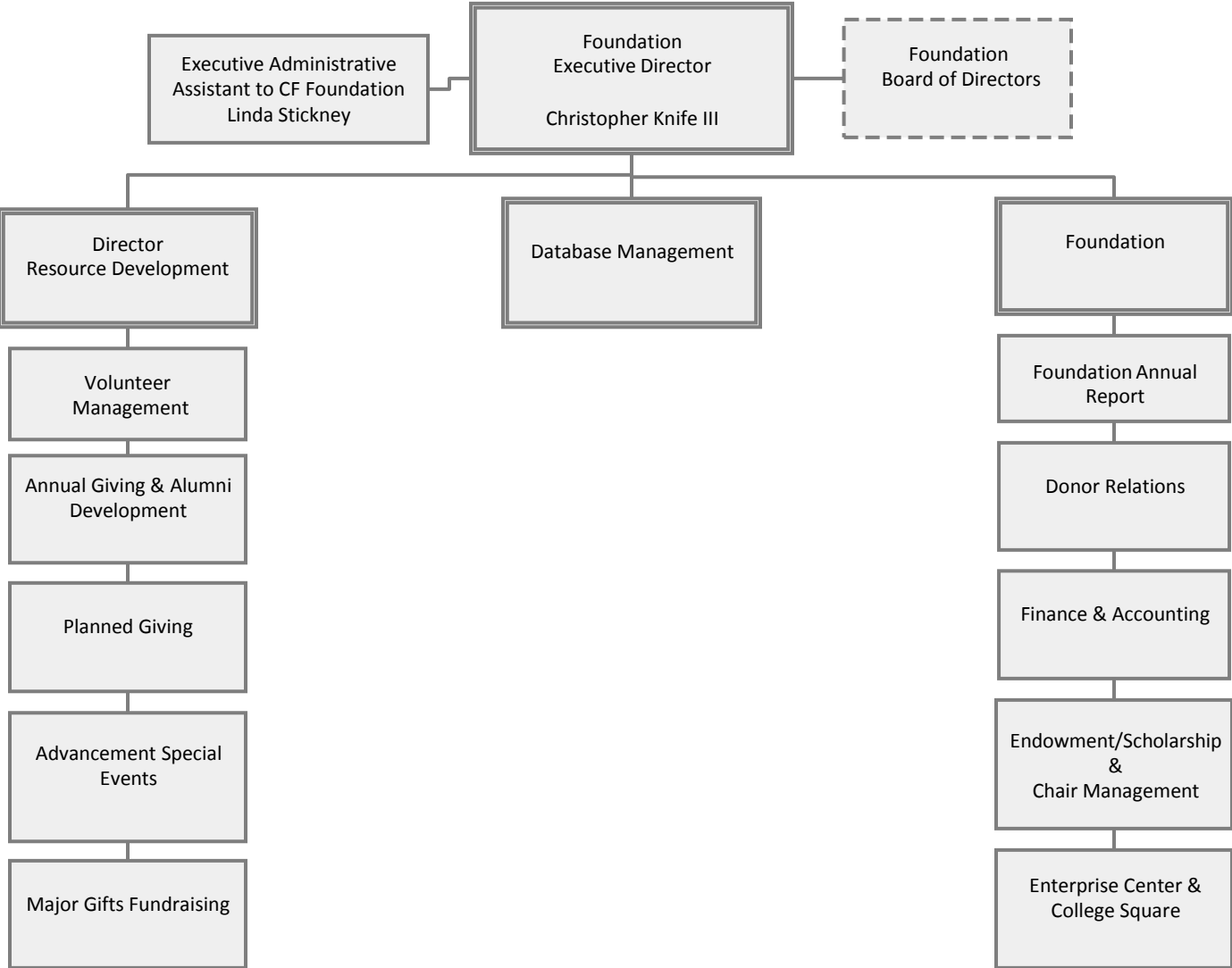
College of Central Florida



College of Central Florida does not discriminate against any person on the basis of race, color, ethnicity, religion, gender, age, marital status, national origin, genetic information or disability status in its programs, activities and employment. For inquiries regarding nondiscrimination policies contact Equity Officer, Ocala Campus, Ewers Century Center, Room 201C, 3001 S.W. College Road, 352-854-2322, ext. 1437, or smithc@cf.edu.

# Organizational Structure

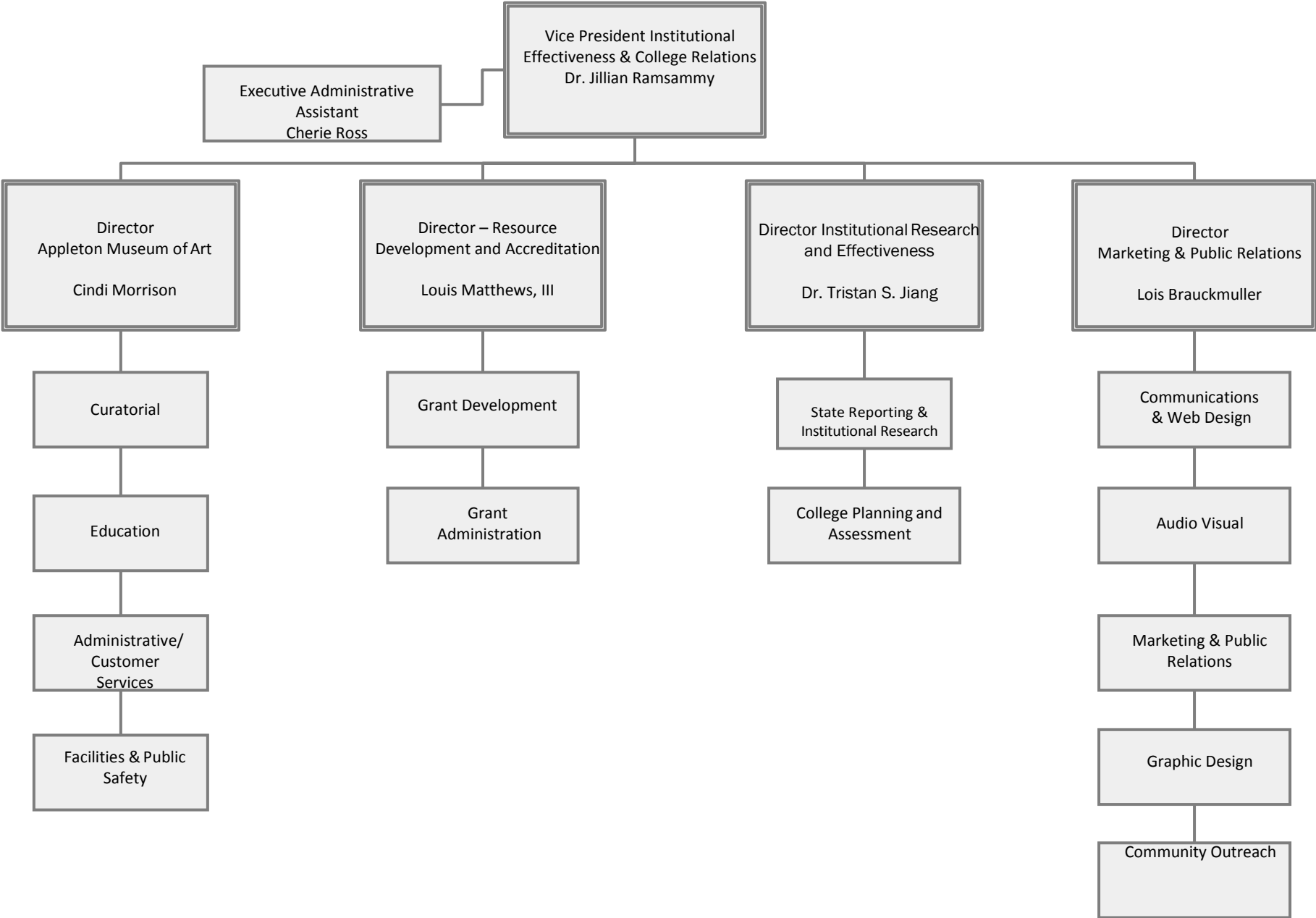
College of Central Florida



College of Central Florida does not discriminate against any person on the basis of race, color, ethnicity, religion, gender, age, marital status, national origin, genetic information or disability status in its programs, activities and employment. For inquiries regarding nondiscrimination policies contact Equity Officer, Ocala Campus, Ewers Century Center, Room 201C, 3001 S.W. College Road, 352-854-2322, ext. 1437, or smithc@cf.edu.

# Organizational Structure

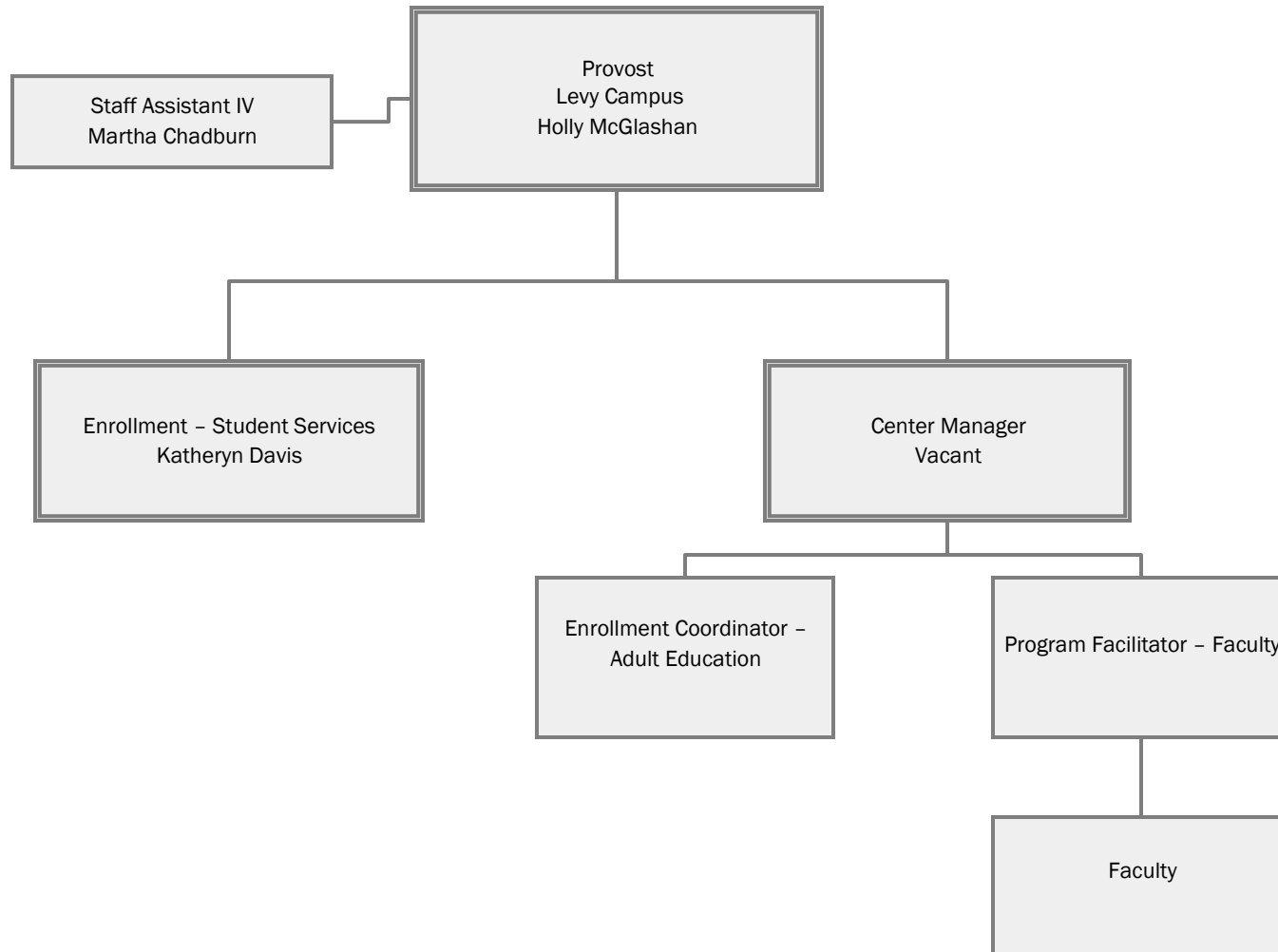
College of Central Florida



College of Central Florida does not discriminate against any person on the basis of race, color, ethnicity, religion, gender, age, marital status, national origin, genetic information or disability status in its programs, activities and employment. For inquiries regarding nondiscrimination policies contact Equity Officer, Ocala Campus, Ewers Century Center, Room 201C, 3001 S.W. College Road, 352-854-2322, ext. 1437, or smithc@cf.edu.

# Organizational Structure

College of Central Florida



College of Central Florida does not discriminate against any person on the basis of race, color, ethnicity, religion, gender, age, marital status, national origin, genetic information or disability status in its programs, activities and employment. For inquiries regarding nondiscrimination policies contact Equity Officer, Ocala Campus, Ewers Century Center, Room 201C, 3001 S.W. College Road, 352-854-2322, ext. 1437, or smithc@cf.edu.